

SHELF HOLDER

AP-FA20



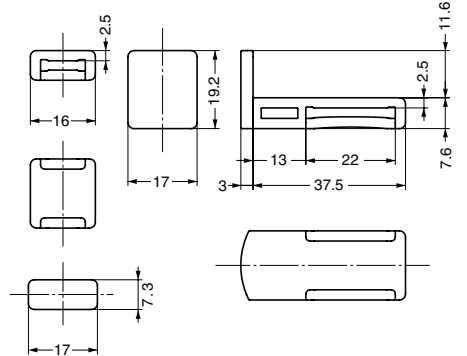
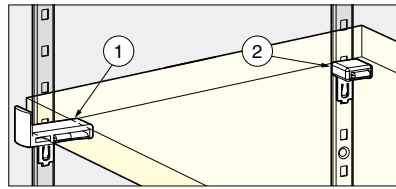
Features

Use with SPE-FB20S (P.174), AP-FB20 (P.176).

Remarks

Sold in sets (2 parts). 2 sets are necessary for 1 shelf.

Installation



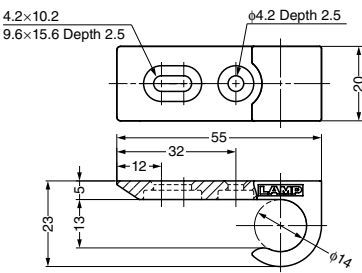
Shelf Support	Board Thickness	Distance (Centre of shelf standard to edge of the shelf board)	
		①	②
AP-FB20 (P.176)	Min.12	18 - 30	20
SPE-FB20S (P.174)	Min.12	17.5 - 30.5	21

Item Code	Item Name	Colour	Material	Weight	Box	Carton
120-024-539	AP-FA20-WT	White	Polyethylene (PE)	4.9 g	100 pcs	2500 pcs
120-026-164	AP-FA20-BL	Black	Polyethylene (PE)	4.9 g	100 pcs	2500 pcs

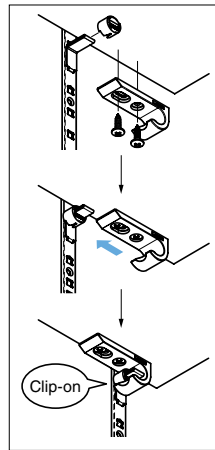
SHELF SUPPORT HOOK



AP-FK20D



How to Install



Features

- Shelf support hook to be used with dowel AP-FK20C and shelf support.
- Recommended angle: 0 - 60°.
- Temporary holding feature.

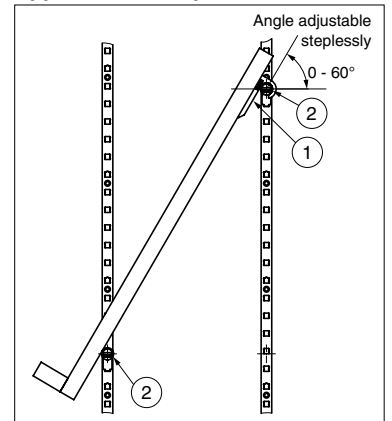
Remarks

- Used in pairs.
- Dowel AP-FK20C and shelf support is sold separately (See below).

Parts Included

Truss head tapping screw 4x16 (SUS) 2 pcs.

Application Example



- ① AP-FK20D
- ② AP-FK20C (Sold separately)

Item Code	Item Name	Material	Colour	Door Thickness	Load Capacity	Weight	Box
120-030-482	AP-FK20D	Polyacetal (POM)	White	Min.18	294 N / 30 kgf	12 g	40 pcs

*AP-FK20D x 2 pcs. / Angle: 60°

DOWEL

AP-FK20C



Installation

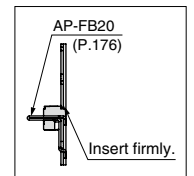
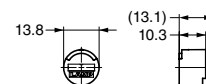
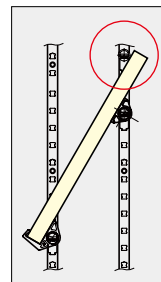


Features

- Recommended to use extra pieces for AP-FK20 (P.178) to hold angled shelf.
- For SPE-FB20S (P.174) and AP-FB20 (P.176).

Remarks

4 pcs are originally included in shelf holder AP-FK20.



Item Code	Item Name	Colour	Material	Weight	Box
120-024-538	AP-FK20C	White	Polyethylene (PE)	1.0 g	1000 pcs