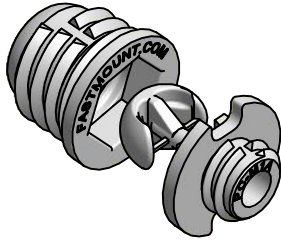


**PC-01 Self tapping clip set = PC-M1A + PC-F1**

INDUSTRY FIT:    

SPECIFICATION:

STANDARD RANGE



USE WITH:

PC-RF1    PC-SF1    PC-SM2    PC-M2H



MATERIAL: White acetal copolymer

MORE INFO: Installation Guide IG\_PC-F1, Setout Guide TD-02

The Fastmount™ multi-award winning system has revolutionized the mounting of panels. Panels can easily be removed and refitted in any sequence time after time.

Self tapping clip products PC-F1 & PC-M1A make up the PC-01 clip set. These core products work with our range of standard clips designed for adhesive fix, heavy duty, high sheer strength and variable gap requirements. Supplied with installation and removal tools.

**BENEFITS**

- Self-aligning installation without adhesives
- Perfect panel alignment secure mounting every time
- Remove and refit panels in any sequence 200+ times
- Saves time and reduces cost
- 5kg pull out load per clip
- Allows for flexing and expansion of panel and support frame

**APPLICATIONS**

- Suitable for covered or painted & prefinished panels
- Ceiling and wall panels
- Exterior panels
- Refits and upgrades of existing installations
- Install into a variety of substrates
- Mounting options for composites and thin-walled panels

INSTALLATION: Partially exploded section through showing typical installation method

