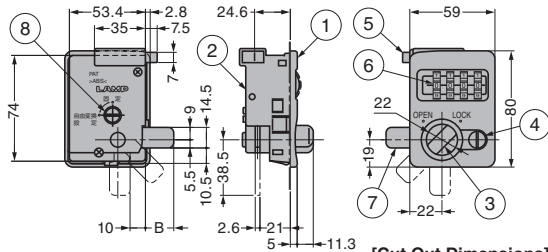


CABINET LOCK WITH DIAL DIT-19 Clip-on Installation

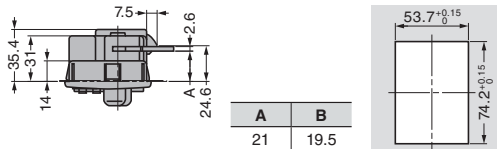
INSTRUCTION



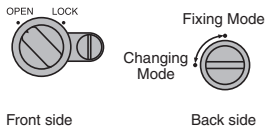
- Turn the dial to lock/unlock.
- Able to switch to Changing Mode or Fixing Mode:
Changing Mode - Changing the key number according to users.
Fixing Mode - Applied the same number as registered.
- One-touch installation.
- Possible to search the number to unlock with Search Key (sold separately).
- Case with latch.
- Possible to engrave any number on body above the dial.

CAM
LOCKSDIAL
LOCKSGLASS
DOOR
LOCKSCABINET
DOOR
LOCKSOTHER
LOCKS

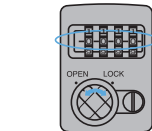
[Cut Out Dimensions]



[Changing Mode]

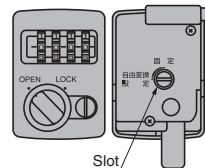


1. Turn the knob to "OPEN" on front side. Turn the slot to "Changing Mode" on back side.

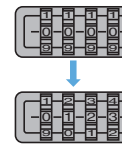


2. Set new number and turn the knob to "LOCK" on front side.

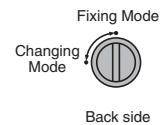
[Fixing Mode]



1. Turn the knob to "OPEN" on front side. Turn the slot to "Changing Mode" on back side.



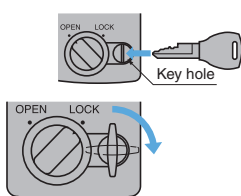
2. Set new number.



3. Turn the slot to "Fixing Mode" on back side.

※Before setting new number, please open the door.

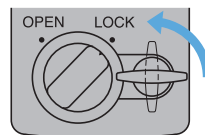
[How to Search Dial Number] Using Search Key



1. Insert Search Key and turn clockwise.



2. Turn each dial till click (the number clicked is your dial number).
※Do not turn the dial with excessive force.



3. Turn Search Key counterclockwise and remove.



4. Turn the knob to "OPEN" to unlock.

No.	Part Name	Material	Finish/Colour
①	Body	ABS	White
②	Case		
③	Knob		
④	Cover		
⑤	Latch	POM	
⑥	Dial	PC	-
⑦	Cam	Steel (SPCC)	Coloured Zinc Chromate
⑧	Switching Shaft	PC	-

[Body]

RoHS	CAD	Item Code	Item Name	Door Thickness	Weight (g)	Box (pcs)	Carton (pcs)
-	SD	150-014-156	DIT-19	0.8	162	1	80

[Search Key] Sold Separately

RoHS	CAD	Item Code	Item Name	Weight (g)	Box (pcs)	Carton (pcs)
CF	SD	150-014-157	DIT-SK	11	1	-