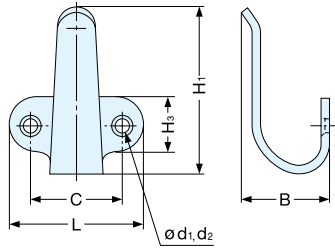


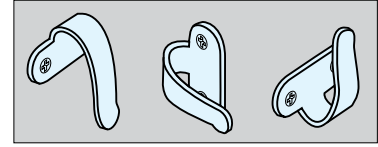
HOOK



2H



• Unique design, also can be used as a pull.



Material	Finish
304 Stainless Steel	Satin

Item No.	L	C	C ₁	H	B	d ₁	d ₂	Load Capacity (kg)	Weight (g)	Box (pcs)	Carton (pcs)	Screw
2H-20	28.0 (1-3/32")	18.0	10	30 (1-3/16")	18	4	6.2	10 (22 lbs)	13	120	1200	3.1 × 16
2H-30	32.5 (1-9/32")	20.0	13	39 (1-17/32")			7.0		18	100	1000	
2H-40	35.0 (1-3/8")	21.5	16	44 (1-47/64")	23		6 (13 lbs)	23	80	800	3.5 × 16	
2H-50	43.0 (1-11/16")	30.0	18	56 (2-13/64")	25			34	50	500		

HOOK

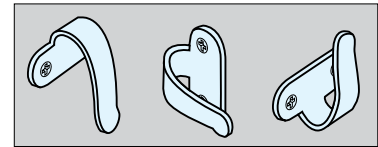
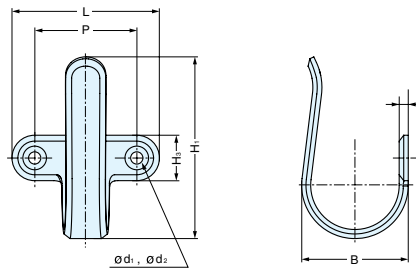


4H



4H-40M

4H-65TT



Material	Finish
304 Stainless Steel	Mirror (M)/Satin (TT)

Item No.	L	P	H ₁	H ₂	B	d ₁	d ₂	Weight (g)	Box (pcs)	Carton (pcs)
4H-40M	40 (1-37/64")	27 (1-1/16")	47 (1-27/32")	13 (33/64")	30 (1-3/16")	4.4	8.4	44	20	200
4H-40TT										
4H-55M	55 (2-11/64")	38 (1-1/2")	65 (2-9/16")	17 (43/64")	40 (1-37/64")			81	15	150
4H-55TT										
4H-65M	65 (2-9/16")	45 (1-49/64")	80 (3-5/32")	20 (25/32")	47 (1-27/32")	5.4	10.4	120	10	100
4H-65TT										

HOOK

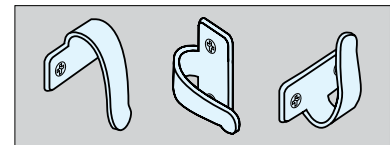
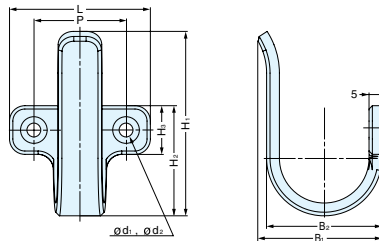


5H



5H-85M

5H-85TT



Material	Finish
304 Stainless Steel	Mirror (M)/Satin (TT)

Item No.	L	P	H ₁	H ₂	H ₃	B ₁	B ₂	d ₁	d ₂	Load Capacity (kg)	Weight (g)	Box (pcs)	Carton (pcs)
5H-45M	45 (1-49/64")	30 (1-3/16")	56.0 (2-13/64")	34.5	15	37.4 (1-15/32")	32.5	4.5	9.0	30.6 (67 lbs)	74	15	150
5H-45TT													
5H-60M	60 (2-23/64")	40 (1-37/64")	72.7 (2-55/64")	43.4	19	47.7 (1-7/8")	43.5	5.5	10.5		133	10	100
5H-60TT													
5H-85M	85 (3-11/32")	60 (2-23/64")	94.0 (3-45/64")	60.6	25	66.7 (2-5/8")	58.2	6.5	12.4	238	5	50	
5H-85TT													