

HOOK

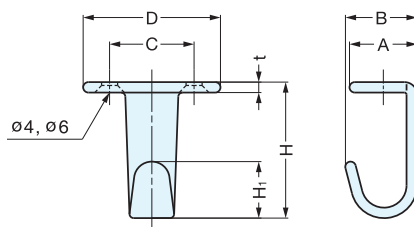


HJ

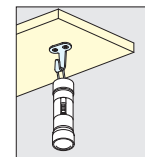


HJ-50

HJ-30SBL



• Ideal for undermount applications.



Installation

Material	Finish
304 Stainless Steel	Satin/Black (BL)

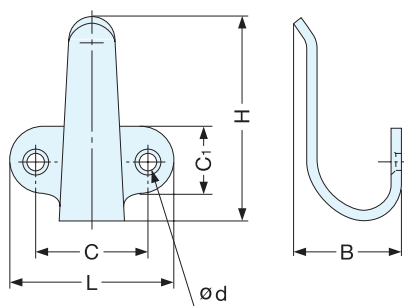
Item No.	D	C	H	H ₁	A	B	t	Load Capacity (kg)	Weight (g)	Box (pcs)	Carton (pcs)
HJ-20	28.0 (1-3/32")	18	27.0 (1-11/16")	11.0	13	17 (43/64")	2.5	10 (22.0 lbs)	11	120	1200
HJ-20SBL								8 (17.6 lbs)			
HJ-30*	33.0 (1-9/32")	20	32.5 (1-9/32")	13.5	16	22 (7/8")	2.5	10 (22.0 lbs)	30	40	800
HJ-30SBL								8 (17.6 lbs)			
HJ-50*	43.5 (23/32")	30	47.0 (1-27/32")	19.6	21	22 (7/8")	2.5	10 (22.0 lbs)	30	40	800
HJ-50SBL								8 (17.6 lbs)			

* NSF Component

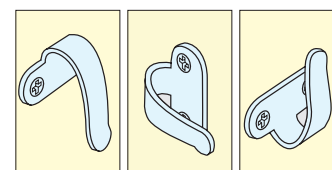
HOOK



2H



• Unique design, also can be used as a pull.



Installation

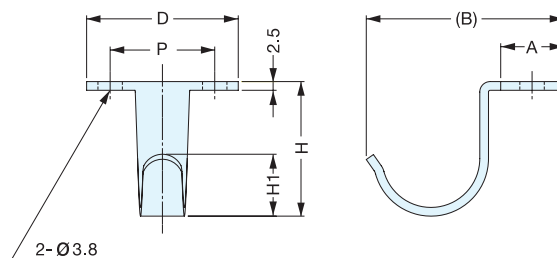
Material	Finish
304 Stainless Steel	Satin

Item No.	L	C	C ₁	H	B	d	Load Capacity (kg)	Weight (g)	Box (pcs)	Carton (pcs)	Screw
2H-20	28.0 (1-3/32")	18.0	10	30 (1-3/16")	18	4.62	10 (22.0 lbs)	13	120	1200	3.1 × 16
2H-30	32.5 (1-09/32")	20.0	13	39 (1-17/32")		4.70		18	100	1000	
2H-40	35.0 (1-3/8")	21.5	16	44 (1-47/64")	23	4.70	6 (13.2 lbs)	23	80	800	3.5 × 16
2H-50	43.0 (1-11/16")	30.0	18	56 (2-13/64")				25	34	50	

HOOK



HJU



Material	Finish
304 Stainless Steel	Satin

Item No.	D	P	H	H ₁	A	B	Load Capacity (kg)	Weight (g)	Box (pcs)	Carton (pcs)
HJU-30S	32.5 (1-9/32")	20 (25/32")	25.0 (63/64")	13	13	41.8	8 (17.6 lbs)	15	30	600
HJU-50S	43.5 (1-45/64")	30 (1-11/64")	38.5 (1-33/64")	18	18	59.0	10 (22.0 lbs)	30	40	800