

Zwei L STAINLESS STEEL HOOK



ZL-2101

HOOKS

STAINLESS STEEL HOOK

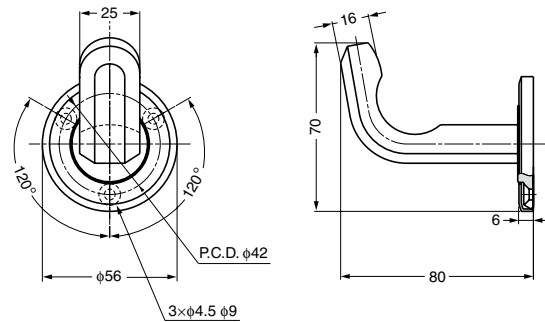


Features

- Made of highly corrosion resistant SUS316
- Ultrapremium Zwei L finish. Zwei L finish: Using top class polishing technology, these products combine the elegance of Satin with the deep glow of a Mirror.
- Comes with an anchor plug, allowing for installation into hard surfaces like concrete or tile.
- Designed so that installation screw is not visible after installation

Parts Included

- Countersunk head wood screw 4.1 × 32 (SUS)
- Plug



Item Code	Item Name	Material	Finish	Load Capacity		Weight	Box
110-020-400	ZL-2101	Stainless Steel (SUS316)	Zwei L Finish	359 N	37 kgf	413 g	1 pc

Zwei L STAINLESS STEEL HOOK



ZL-2102

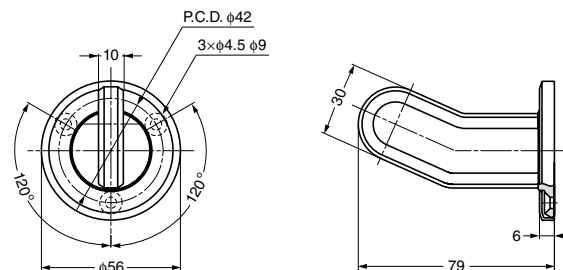


Features

- Made of highly corrosion resistant SUS316
- Ultrapremium Zwei L finish. Zwei L finish: Using top class polishing technology, these products combine the elegance of Satin with the deep glow of a Mirror.
- Comes with an anchor plug, allowing for installation into hard surfaces like concrete or tile.
- Designed so that installation screw is not visible after installation

Parts Included

- Countersunk head wood screw 4.1 × 32 (SUS)
- Plug



Item Code	Item Name	Material	Finish	Load Capacity		Weight	Box
110-020-401	ZL-2102	Stainless Steel (SUS316)	Zwei L Finish	294 N	30 kgf	450 g	1 pc