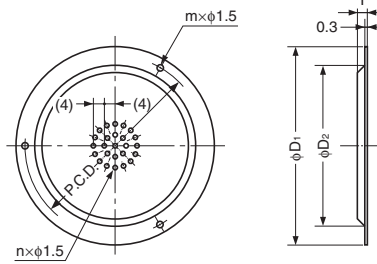


VENTILATOR

STAINLESS 304 STEEL

AST



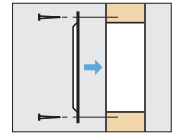
Features

Insect-proof.

Parts Included

Round head nail 1.2x10 (SUS)

Installation

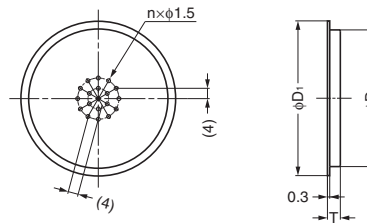


Item Code	Item Name	Material	Finish	D ₁	D ₂	T	P.C.D.	m	n	Max. Exhaust Area	Weight	Box	Carton
210-030-044	AST- 45	Stainless Steel (SUS304)	Satin	45	34	3	φ40	3	37	≈ 65 mm ²	5 g	100 pcs	3600 pcs
210-030-045	AST- 55	Stainless Steel (SUS304)	Satin	55	44	3	φ50	3	59	≈ 104 mm ²	6.3 g	100 pcs	3600 pcs
210-030-046	AST- 70	Stainless Steel (SUS304)	Satin	70	55	3	φ64	3	127	≈ 224 mm ²	10 g	100 pcs	2400 pcs
210-030-047	AST-100	Stainless Steel (SUS304)	Satin	100	81	4	φ91	4	271	≈ 478 mm ²	20 g	50 pcs	500 pcs

VENTILATOR

STAINLESS 304 STEEL

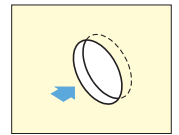
ASM



Features

Insect-proof.

Installation

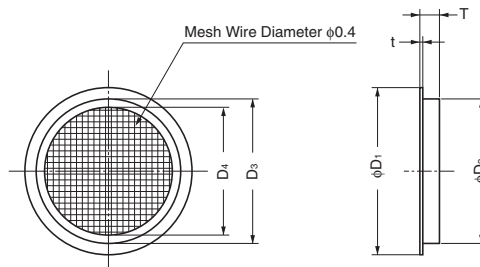


Item Code	Item Name	Material	Finish	D ₁	D ₂	T	n	Max. Exhaust Area	Weight	Box	Carton
210-030-010	ASM-37	Stainless Steel (SUS304)	Satin	36	30.5	4.5	37	≈ 65 mm ²	3 g	100 pcs	3600 pcs
210-030-011	ASM-45	Stainless Steel (SUS304)	Satin	46	40.5	4.5	59	≈ 104 mm ²	5 g	100 pcs	3600 pcs
210-030-012	ASM-60	Stainless Steel (SUS304)	Satin	60	52.5	5	127	≈ 224 mm ²	8 g	100 pcs	2400 pcs
210-030-013	ASM-85	Stainless Steel (SUS304)	Satin	85	77	5	271	≈ 478 mm ²	13.5 g	50 pcs	1000 pcs

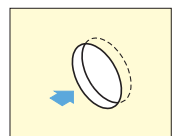
VENTILATOR

STAINLESS 304 STEEL

SAM



Installation



Item Code	Item Name	Material	Finish	D ₁	D ₂	D ₃	D ₄	T	t	Max. Exhaust Area	Weight	Box	Carton
210-030-164	SA-M 37	Stainless Steel (SUS304)	Satin	36	31.5	30	25	5.2	0.3	≈ 290 mm ²	5 g	70 pcs	1400 pcs
210-030-165	SA-M 45	Stainless Steel (SUS304)	Satin	46	41.5	40	35	5.2	0.3	≈ 570 mm ²	6 g	60 pcs	1200 pcs
210-030-166	SA-M 60	Stainless Steel (SUS304)	Satin	60	53.5	52	46	6.5	0.3	≈ 1000 mm ²	10 g	50 pcs	1000 pcs
210-030-167	SA-M 85	Stainless Steel (SUS304)	Satin	85	77.8	76.5	68	7	0.3	≈ 2150 mm ²	18 g	30 pcs	600 pcs
210-030-168	SA-M120	Stainless Steel (SUS304)	Satin	120	110.5	108	99	7.2	0.5	≈ 4480 mm ²	47 g	20 pcs	200 pcs