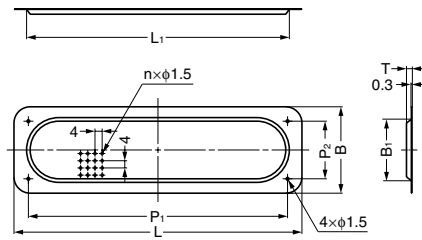
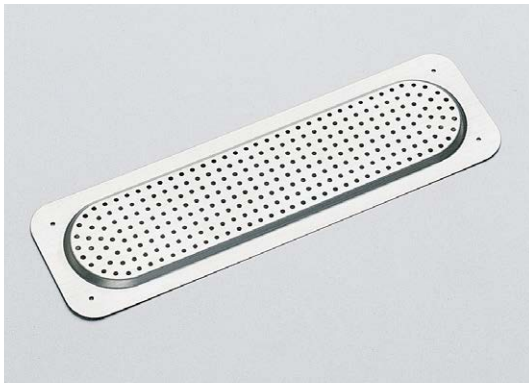


VENTILATOR



AST



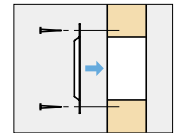
Features

Insect-proof.

Parts Included

Round head nail 1.2x10 (SUS)

Installation

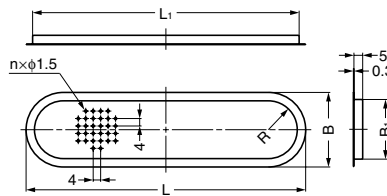


Item Code	Item Name	Material	Finish	L	L <sub>1</sub>	B	B <sub>1</sub>	P <sub>1</sub>	P <sub>2</sub>	T	n	Max. Exhaust Area	Weight	Box	Carton
210-030-052	AST-160	Stainless Steel (SUS304)	Satin	160	146	48	36	144	32	3	268	≈ 470 mm <sup>2</sup>	18 g	50 pcs	1000 pcs
210-030-053	AST-210	Stainless Steel (SUS304)	Satin	210	196	58	46	194	42	4	450	≈ 790 mm <sup>2</sup>	28 g	50 pcs	1200 pcs

VENTILATOR



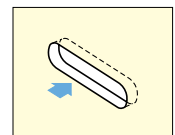
ASD



Features

Insect-proof.

Installation

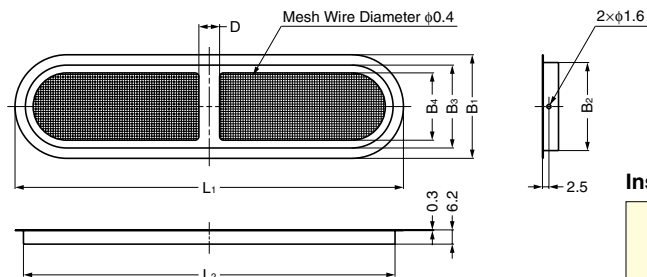


Item Code	Item Name	Material	Finish	L	L <sub>1</sub>	B	B <sub>1</sub>	R	n	Max. Exhaust Area	Weight	Box	Carton
210-030-018	ASD-150	Stainless Steel (SUS304)	Satin	150	143	40	33	16	268	≈ 470 mm <sup>2</sup>	16 g	80 pcs	1920 pcs
210-030-019	ASD-200	Stainless Steel (SUS304)	Satin	200	193	50	42.8	21	450	≈ 790 mm <sup>2</sup>	25 g	40 pcs	960 pcs

VENTILATOR



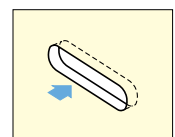
SAD



Parts Included

Round head nail 1.2x10 (SUS)

Installation



Item Code	Item Name	Material	Finish	L <sub>1</sub>	L <sub>2</sub>	B <sub>1</sub>	B <sub>2</sub>	B <sub>3</sub>	B <sub>4</sub>	D	Max. Exhaust Area	Weight	Box	Carton
210-030-169	SA-D150	Stainless Steel (SUS304)	Satin	150	143.5	40	34	32	26	8	≈ 1880 mm <sup>2</sup>	21 g	30 pcs	600 pcs
210-030-170	SA-D200	Stainless Steel (SUS304)	Satin	200.5	194	50	44	42	35	10	≈ 3800 mm <sup>2</sup>	33 g	30 pcs	300 pcs