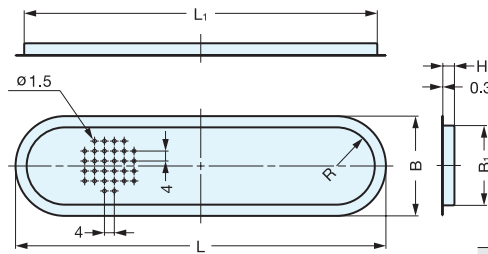
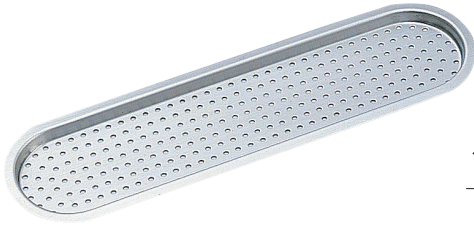


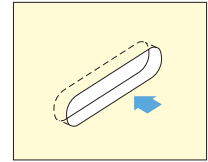
VENTILATOR



ASD



- 1.5 mm (1/16") diameter holes.
- Affix with glue.



Installation

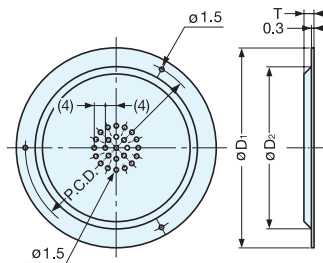
Material	Finish
304 Stainless Steel	Satin

Item No.	L	L ₁	H	B	B ₁	R	Holes	Weight (g)	Box (pcs)	Carton (pcs)
ASD-150	150 (5-29/32")	143	5	40 (1-37/64")	33.0	16	268	14.5	80	1920
ASD-200	200 (7-7/8")	193		50 (1-31/32")	42.8	21	450	23.0	40	960

VENTILATOR



AST



- 1.5 mm (1/16") diameter holes.
- Supplied with tacks.

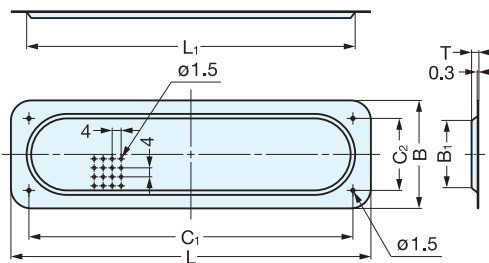
Material	Finish
304 Stainless Steel	Satin

Item No.	D ₁	D ₂	T	P.C.D.	Holes	Weight (g)	Box (pcs)	Carton (pcs)
AST-45	45 (1-25/32")	34 (1-11/32")	3	40	37	4	100	3600
AST-55	55 (2-5/32")	44 (1-47/64")		50	59	5		
AST-70	70 (2-3/4")	55 (2-5/32")		64	127	9		
AST-100	100 (3-15/16")	81 (3-3/16")	4	91	271	19	50	500

VENTILATOR



AST-160, 210



- 1.5 mm (1/16") diameter holes.
- Supplied with tacks.

Material	Finish
304 Stainless Steel	Satin

Item No.	L	L ₁	B	B ₁	C ₁	C ₂	T	Holes	Weight (g)	Box (pcs)	Carton (pcs)
AST-160	160 (6-19/64")	146	48 (1-57/64")	36	144	32	3	268	18	50	1000
AST-210	210 (8-17/64")	196	58 (2-9/32")	46	194	42	4	450	28		200