

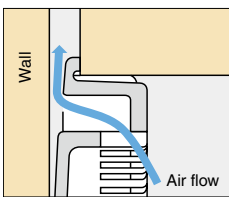
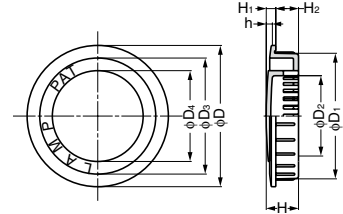
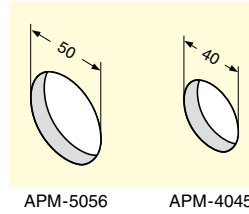
VENTILATOR

APM



**Features**  
Insect-proof.

**Cut Out Dimensions**



Item Code	Item Name	Colour	Material	D	D <sub>1</sub>	D <sub>2</sub>	D <sub>3</sub>	D <sub>4</sub>	H	H <sub>1</sub>	H <sub>2</sub>	h	Cut Out Dimensions	Max. Exhaust Area	Weight	Box	Carton
210-030-022	APM-4045BR	Brown	ABS	45	39.8	24.6	36.2	28.2	10.3	3.3	7	1.6	φ40	≈ 115 mm <sup>2</sup>	5 g	150 pcs	900 pcs
210-030-021	APM-4045W	White	ABS	45	39.8	24.6	36.2	28.2	10.3	3.3	7	1.6	φ40	≈ 115 mm <sup>2</sup>	5 g	150 pcs	900 pcs
210-030-024	APM-5056BR	Brown	ABS	56	49.8	32	46	36	12.8	3.8	9	1.8	φ50	≈ 192 mm <sup>2</sup>	9 g	100 pcs	600 pcs
210-030-023	APM-5056W	White	ABS	56	49.8	32	46	36	12.8	3.8	9	1.8	φ50	≈ 192 mm <sup>2</sup>	9 g	100 pcs	600 pcs

VENTILATOR

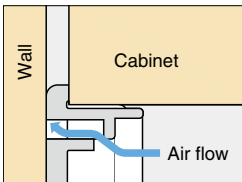
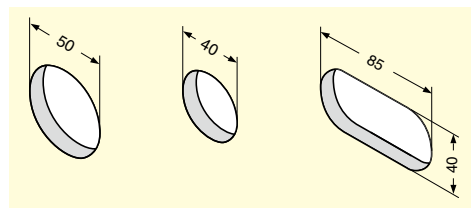
APB



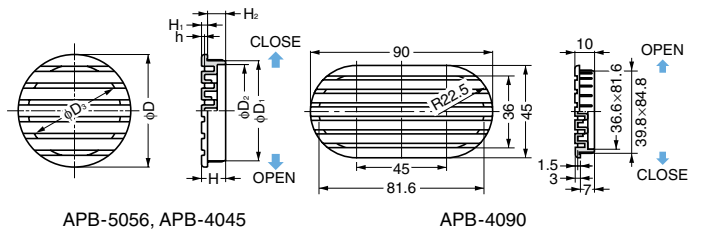
**Features**

- Insect-proof.
- Slits placed in uneven levels hide the air hole and prevents from seeing beyond.

**Cut Out Dimensions**



Allows air flow even if the surface of the ventilator is directly on the wall.



Item Code	Item Name	Colour	Material	D	D <sub>1</sub>	D <sub>2</sub>	D <sub>3</sub>	H	H <sub>1</sub>	H <sub>2</sub>	h	Cut Out Dimensions	Max. Exhaust Area	Weight	Box	Carton
210-030-038	APB-4045W	White	ABS	45	39.8	36.6	36.6	10	3	7	1.5	φ40	≈ 152 mm <sup>2</sup>	7 g	150 pcs	900 pcs
210-030-040	APB-5056W	White	ABS	56	49.8	46	46	12	3	9	1.5	φ50	≈ 211 mm <sup>2</sup>	11 g	100 pcs	600 pcs
210-030-042	APB-4090W	White	ABS	-	-	-	-	-	-	-	-	40x85 (Hole)	≈ 332 mm <sup>2</sup>	16 g	80 pcs	480 pcs