

## STOPPER

## LGB30-ST

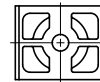
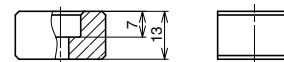
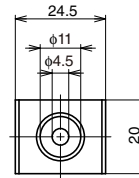


## Features

- Used for preventing guide block LGB-30CM from coming off.
- Install to guide rail LGB30 with screws. Mounting screws not included.

## Remarks

Do not use for stopping guide block collision.



CAD	Item Code	Item Name	Material	Colour	Weight (g)	Box (pcs)	Carton (pcs)
	190-036-127	LGB30-ST	POM	Black	5.6	240	960

## MOUNTING PLATE

## LGB30-P65-100



## Installation



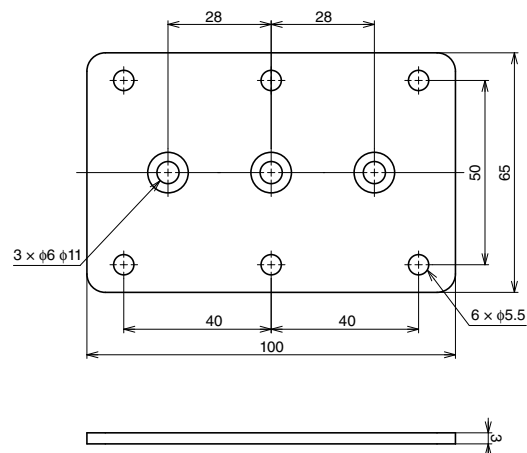
## Features

Install to guide block LGB-30CM with supplied screws.

## Parts Included

Hexagon socket countersunk head screw M5 x 16 3 pcs (SUS)

## Dimensions



CAD	Item Code	Item Name	Material	Finish	Weight (g)	Box (pcs)	Carton (pcs)
	190-036-465	LGB30-P65-100	Stainless Steel (SUS304)	Barrel Polished	137	50	—