

GUIDE RAIL

LGB30

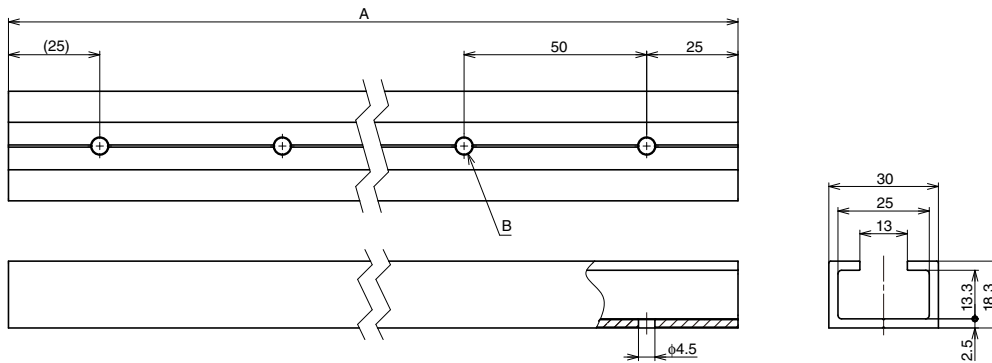


Recommended Screws

- Hexagon socket button head screw M4
- Binding head screw M4
- Binding head tapping screw 4

Remarks

- Mounting holes and both ends are not surface treated.
- Do not use under moment load.



CAD	Item Code	Item Name	A	B	Material	Finish	Weight (g/pc)	Box (pcs)	Carton (pcs)
	190-036-273	LGB30-400	400	8	Aluminium Alloy	Anodised Silver	195	50	-
	190-036-274	LGB30-800	800	16			390	25	-
	190-036-275	LGB30-2000	2000	40			875	10	-

GUIDE BLOCK (SILENT TYPE)

LOAD CAPACITY Max. 294N

LGB-30CM



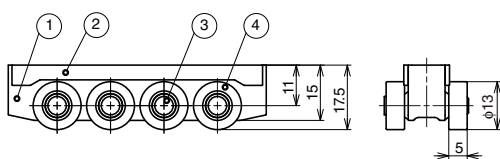
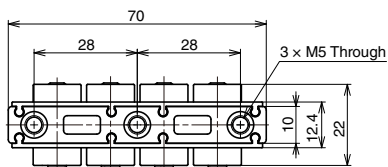
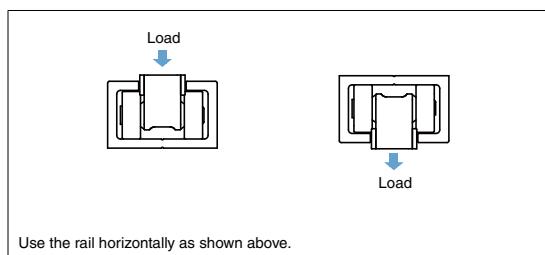
Features

- Bearing roller used in guide block allows for smooth movement.
- Plastic outer ring type bearing roller provides silent operation.
- Made exclusively for use with the guide rail LGB30.

Remarks

Do not use under moment load.

Load Direction



No.	Product Name	Material	Finish / Colour
①	Body	Zinc Alloy (ZDC)	Clear Zinc Chromate (Trivalent)
②	Slide Protector	PE	Black
③	Roller Shaft	Stainless Steel (SUS304)	Plain
④	Roller	Steel/POM	Outer Ring: Black

CAD	Item Code	Item Name	Load Capacity N	Load Capacity kgf	Weight (g)	Box (pcs)	Carton (pcs)
	190-036-158	LGB-30CM	Max. 294	Max. 30	76	200	2000