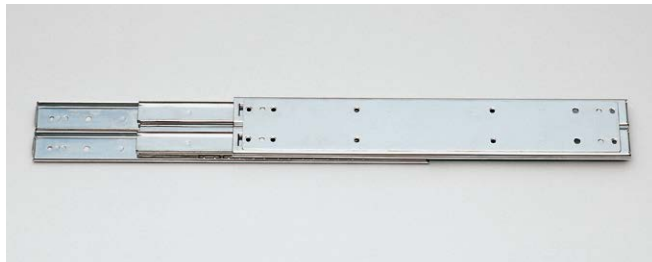


FULL EXTENSION SLIDE



ESR10



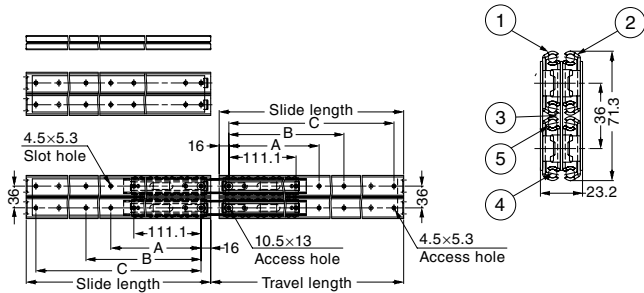
Features

- Full extension (3 members).
- Non-handed.
- Heavy duty.

Recommended Screws

M4

DRAWER SLIDES



No.	Part Name	Material	Finish
①	Outer Rail	Stainless Steel (SUS304)	Satin
②	Inner Rail	Stainless Steel (SUS304)	Satin
③	Intermediate Member	Stainless Steel (SUS304)	Satin
④	Retainer	Stainless Steel (SUS304)	-
⑤	Balls	Stainless Steel (SUS304)	-

Sold by piece.

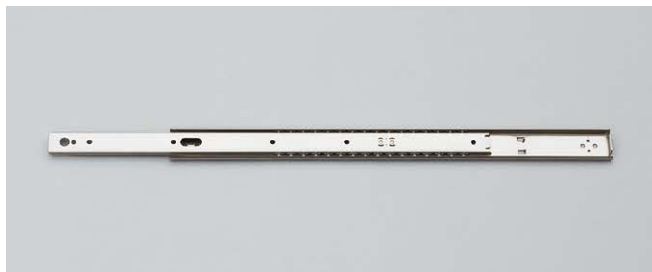
Item Code	Item Name	Slide Length	Travel Length	A	B	C	Load Capacity N	Load Capacity kgf	Weight	Box
190-110-419	ESR10-12	305	319	-	149.2	273	2667 N/pair	272 kgf/pair	1.7 kg/pc	8 pcs
190-110-420	ESR10-14	355.8	369.8	-	200	323.8	2628 N/pair	268 kgf/pair	1.9 kg/pc	8 pcs
190-110-421	ESR10-16	406.6	420.6	-	250.8	374.6	2540 N/pair	259 kgf/pair	2.2 kg/pc	6 pcs
190-110-422	ESR10-18	457.4	471.4	212.7	301.6	425.4	2452 N/pair	250 kgf/pair	2.5 kg/pc	6 pcs
190-110-423	ESR10-20	508.2	522.2	238.1	352.4	476.2	2363 N/pair	241 kgf/pair	2.8 kg/pc	6 pcs
190-110-424	ESR10-22	559	573	263.5	403.2	527	2246 N/pair	229 kgf/pair	3.1 kg/pc	6 pcs
190-110-425	ESR10-24	609.8	623.8	288.9	454	577.8	2118 N/pair	216 kgf/pair	3.5 kg/pc	4 pcs
190-110-426	ESR10-26	660.6	674.6	314.3	504.8	628.6	1961 N/pair	200 kgf/pair	3.7 kg/pc	4 pcs
190-110-427	ESR10-28	711.4	725.4	339.7	555.6	679.4	1785 N/pair	182 kgf/pair	4 kg/pc	4 pcs

FULL EXTENSION SLIDE / 3/4 EXTENSION SLIDE

3/4 EXTENSION SLIDE

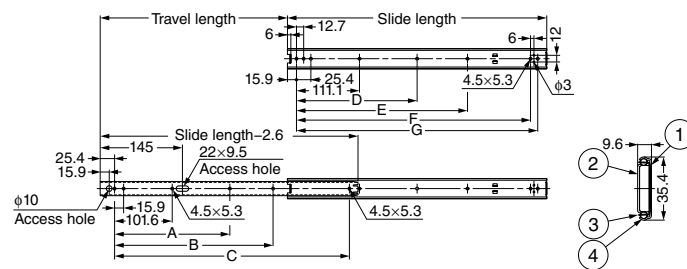


ESR13



Features

- 3/4 extension slide (2 members).
- The drawer can be held in the fully closed position.
- Non-handed.



No.	Part Name	Material	Finish
①	Outer Rail	Stainless Steel (SUS304)	Plain
②	Inner Rail	Stainless Steel (SUS304)	Plain
③	Retainer	Stainless Steel (SUS304)	Plain
④	Balls	Stainless Steel (SUS304)	-

Sold by piece.

Item Code	Item Name	Slide Length	Travel Length	A	B	C	D	E	F	G	Load Capacity N	Load Capacity kgf	Weight	Box
190-111-345	ESR13-12	304.8	228.6	-	177.8	258	-	149.2	260.3	273	481 N/pair	49 kgf/pair	0.33 kg/pc	30 pcs
190-111-346	ESR13-14	355.6	279.4	-	228.6	308.8	-	200	311.1	323.8	461 N/pair	47 kgf/pair	0.38 kg/pc	30 pcs
190-111-347	ESR13-16	406.4	304.8	-	254	359.6	-	250.8	361.9	374.6	422 N/pair	43 kgf/pair	0.42 kg/pc	30 pcs
190-111-348	ESR13-18	457.2	330.2	203.2	279.4	410.4	212.7	301.6	412.7	425.4	402 N/pair	41 kgf/pair	0.49 kg/pc	30 pcs
190-111-349	ESR13-20	508	381	228.6	330.2	461.2	238.1	352.4	463.5	476.2	363 N/pair	37 kgf/pair	0.54 kg/pc	30 pcs
190-111-350	ESR13-22	558.8	406.4	254	355.6	512	263.5	403.2	514.3	527	333 N/pair	34 kgf/pair	0.59 kg/pc	30 pcs
190-111-351	ESR13-24	609.6	431.8	254	381	562.8	288.9	454	565.1	577.8	294 N/pair	30 kgf/pair	0.63 kg/pc	30 pcs
190-111-352	ESR13-26	660.4	482.6	254	431.8	613.6	314.3	504.8	615.9	628.6	265 N/pair	27 kgf/pair	0.68 kg/pc	30 pcs
190-111-353	ESR13-28	711.2	508	279.4	457.2	664.4	339.7	555.6	666.7	679.4	245 N/pair	25 kgf/pair	0.75 kg/pc	30 pcs