

FOOT STAY YFN

TEST METHOD 15

TEST METHOD 16

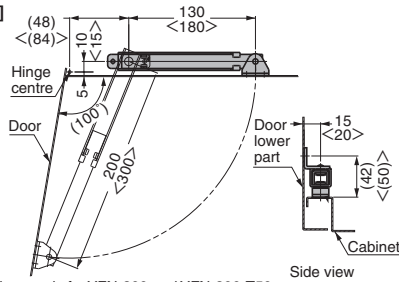
AS

L=R

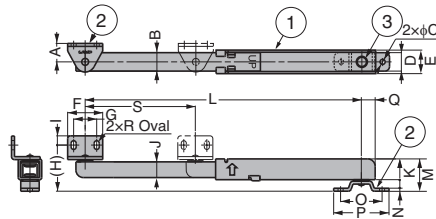


Opening Direction	Item Name	Description	Lock Release Part	Tension Force	Compression Load
Swing Door	YFN-200	Locks When Fully Opened	Body (Lifting with Foot)	882 N/pc (90 kgf/pc)	490 N/pc (50 kgf/pc)
	YFN-300 YFN-300-T50			1470 N/pc (150 kgf/pc)	588 N/pc (60 kgf/pc)

[Installation]



※Dimensions in < > is for YFN-300 and YFN-300-T50.
 ●Drawing above shows the state where the stay is installed to the door bottom, seeing the door from above.



Item Name	L	S	A	B	C	D	E	F	G	H	I	J	K	M	N	O	P	Q	R
YFN-200	200	70	15	15.9	5.5	17	20	33	20	42	8	15.7	20	30	2.3	35	50	10	5.5×8
YFN-300	300	120	20	20		9	20	25.5	38	25	50	10	17	22.5	35	3.2	45 50	60 72	15

RoHS	CAD	Item Code	Item Name	Tension Force N/pc	Tension Force kgf/pc	Compression Load N/pc	Compression Load kgf/pc	Weight (g)	Box (pcs)	Carton (pcs)
Green	Red	180-036-882	YFN-200	882	90	490	50	198	10	100
Green	Red	180-036-854	YFN-300	1470	150	588	60	438	5	30
Green	Red	180-036-853	YFN-300-T50					476	5	30

※The item names and item codes have changed. (Old item names : YF-200, YF-300, YF-300-T50)

- Automatically locks door when fully opened.
- Simply lift the stay with foot toe to release the lock.
- Non-handed: Can be installed on left or right side.
- Designed for bottom mount. (Vertical use not allowed)
- AS parts set for installing to aluminium frame also available. Content of the parts set is as follows.
- Improved version of the foot stay YF-200, YF-300, YF-300-T50. (The product size and dimensions for installation have not changed.)

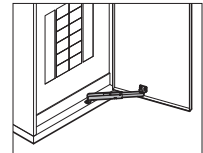
[Applications]

- Switch board, communication equipment, control panel, various display boards, etc.

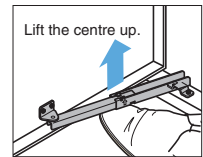
[Remarks]

- Release the lock while supporting the door.
- Do not step on the stay.
- Opening angle and installation position change depending on the position of hinge.

[Application Example]

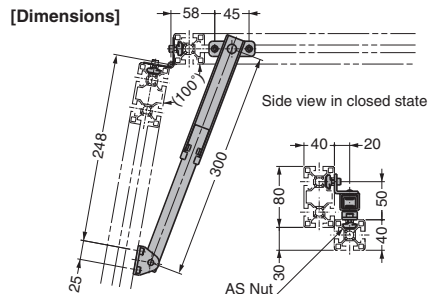
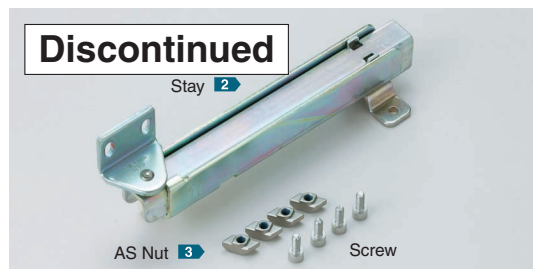


[Lock Release]



AS Parts Set for Installing to Aluminium Frame

Please refer to the series introduction page 1 for details about AS series.



[AS Parts Set] Parts set of screws and AS nuts

RoHS	CAD	Item Code	Item Name	Aluminium Frame	Parts	Weight (g)
Green	-	180-041-625	AS-YF-300-30-8	Groove Width 8 mm	YF-300 : 1 pc AS Nut AS-8M5 : 4 pcs Hexagon Socket Head Cap Screw M5×14 : 4 pcs	-
Green	-	180-041-626	AS-YF-300-30-10	Groove Width 10 mm	YF-300 : 1 pc AS Nut AS-10M5 : 4 pcs Hexagon Socket Head Cap Screw M5×14 : 4 pcs	-

Refer to 1 : FRONT P.20, 2 : P.299, 3 : P.706

LIFT ASSIST STAYS

SOFT CLOSING STAYS

TORQUE STAYS

HEAVY DUTY LOCKING STAYS

FOOT STAYS

LID STAYS

OTHER STAYS

TOP-OPENING

DOWNWARD-OPENING

UPWARD-OPENING

BOTTOM-OPENING

SWING DOOR

LIFT-UP

LIFT-DOWN

UP & OVER

BI-FOLDING

OVER THE TOP