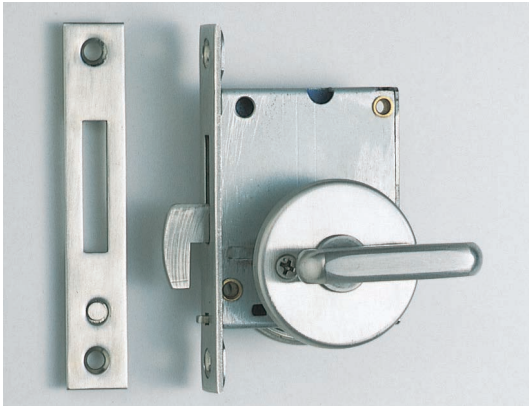


SLIDING DOOR LATCH



HC-30L



Features

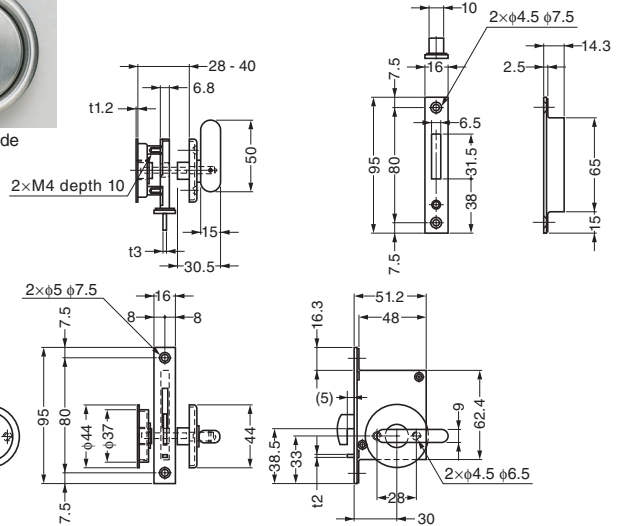
- Ideal for harsh and high corrosion environments.
- Large lever for barrier-free design.
- Easy installation, flat and compact design for various application.
- Can be unlocked from outside in case of emergency.

Parts Included

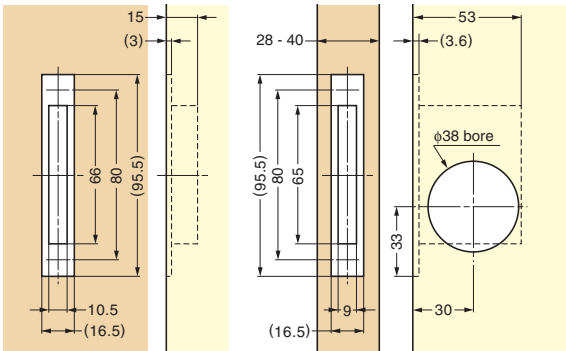
Countersunk head wood screw 3.5×20 (SUS)



From outside



Cut Out Dimensions

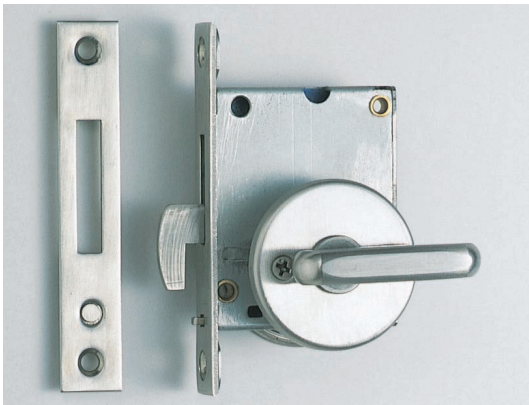


| Item Code | Item Name | Door Thickness | Material | Finish | Weight | Box | Carton |
|-------------|-----------|----------------|--------------------------|--------|--------|-------|--------|
| 140-183-253 | HC-30L | 28 - 40 | Stainless Steel (SUS304) | Satin | 330 g | 5 pcs | 50 pcs |

SLIDING DOOR LATCH W/INDICATOR



HC-30HL



Features

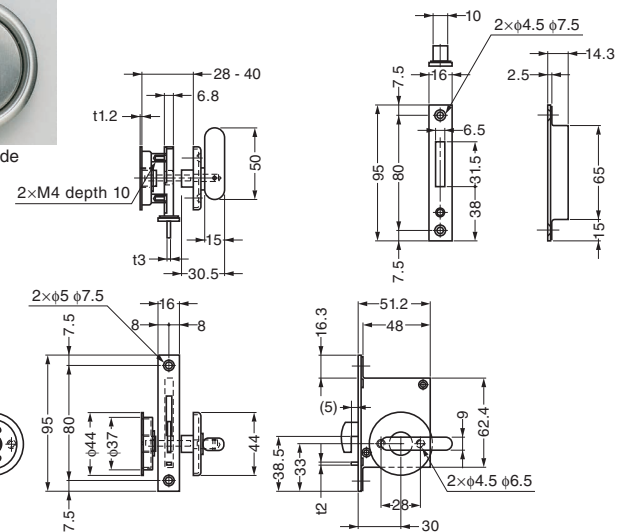
- Ideal for harsh and high corrosion environments.
- Large lever for barrier-free design.
- Sliding door latch with indicator.
- Easy installation, flat and compact design for various application.
- Sliding door latch with indicator.

Parts Included

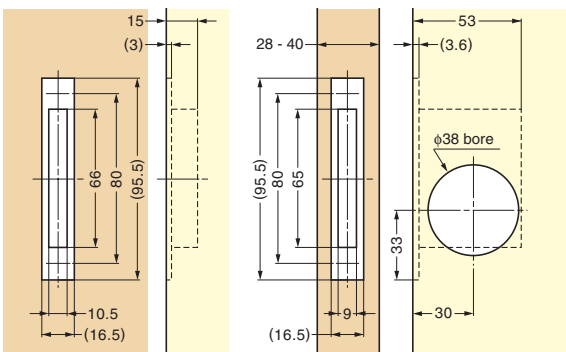
Countersunk head wood screw 3.5×20 (SUS)



From outside



Cut Out Dimensions



| Item Code | Item Name | Door Thickness | Material | Finish | Weight | Box | Carton |
|-------------|-----------|----------------|--------------------------|--------|--------|-------|--------|
| 140-183-252 | HC-30HL | 28 - 40 | Stainless Steel (SUS304) | Satin | 344 g | 5 pcs | 50 pcs |

CATCHES & LATCHES

SLIDING DOOR LATCH