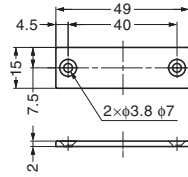


**STAINLESS STEEL COUNTER PLATE**

STAINLESS  
304  
STEEL

**MC-JM49**



**Features**

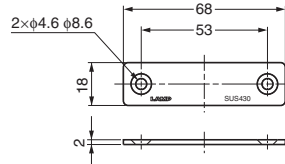
- Plate for MC-JM magnetic catches.
- High corrosion resistance.

Item Code	Item Name	Material	Finish	Weight	Box	Carton
140-050-149	MC-JM49	Stainless Steel (304 Equivalent)	Polished	10 g	100 pcs	1,000 pcs

**STAINLESS STEEL COUNTER PLATE**

STAINLESS  
430  
STEEL

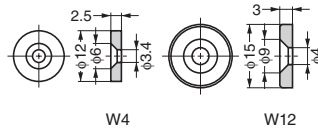
**AS-68**



Item Code	Item Name	Material	Finish	Weight	Box	Carton
140-050-138	AS-68	Stainless Steel (SUS430)	Mirror	17 g	100 pcs	1,000 pcs

**COUNTER PLATE**

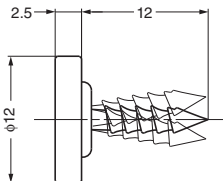
**W**



Item Code	Item Name	Material	Finish	Weight	Box	Carton
140-050-051	W4	Steel	Yellow Zinc Chromate	1.7 g	1,000 pcs	10,000 pcs
140-050-113	W12	Steel	Nickel	3.3 g	600 pcs	3,000 pcs

**COUNTER PLATE**

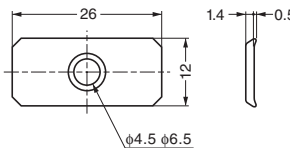
**Z4**



Item Code	Item Name	Material	Finish	Weight	Box	Carton
140-050-110	Z4	Steel	Nickel	2 g	1,000 pcs	4,000 pcs

**COUNTER PLATE**

**SP0207**



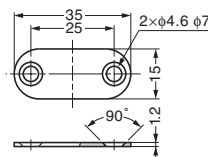
**Features**

- Plate for TC-42, MC-FP5S magnetic catches.

Item Code	Item Name	Material	Finish	Weight	Carton
140-050-323	SP0207	Steel	Clear Zinc Chromate	3.1 g	5,000 pcs

**COUNTER PLATE**

**MC-YN001U**



Item Code	Item Name	Material	Finish	Weight	Carton
140-059-555	MC-YN001U	Steel	Nickel	4 g	5,000 pcs
140-038-025	MC-YN001U-BL	Steel (SPCC)	Copper Plating (Black)	4 g	5,000 pcs