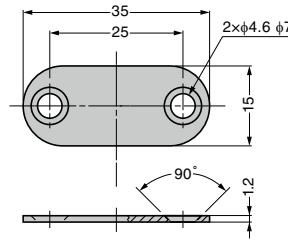


COUNTER PLATE MC-YN001U

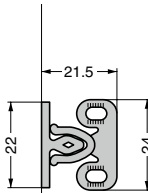


RoHS	CAD	Item Code	Item Name	Material	Finish	Weight (g)	Box (pcs)	Carton (pcs)
RoHS	CAD	140-059-555	MC-YN001U	Steel (SPCC)	Nickel	4	5000	-

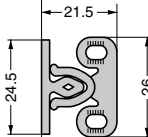
Plastic Catch Size Correlation Diagram (S ≒ 1/2)

[Surface Mount (Vertical) Type]

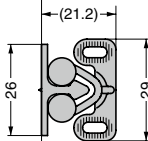
Knuckle Catch
 JC-24, JC-24B (P.643)
 Push-in Force: 30.4 N (3.1 kgf)
 Pulling Force: 26.5 N (2.7 kgf)
 Weight: 1.5 g



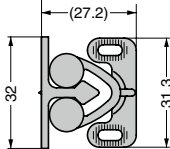
Knuckle Catch
 JC-26 (P.643)
 Push-in Force: 21.6 N (2.2 kgf)
 Pulling Force: 16.7 N (1.7 kgf)
 Weight: 2 g



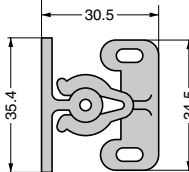
Rotary Catch
 RC6900 (P.642)
 Push-in Force: 10.8 N (1.1 kgf)
 Pulling Force: 15.7 N (1.6 kgf)
 Weight: 3 g



Rotary Catch
 RC6901 (P.642)
 Push-in Force: 21.6 N (2.2 kgf)
 Pulling Force: 31.4 N (3.2 kgf)
 Weight: 4 g

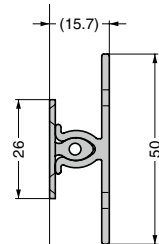


Knuckle Catch
 NAC (P.641)
 Push-in Force: 55.8 N (5.7 kgf)
 Pulling Force: 69.5 N (7.1 kgf)
 Weight: 4.5 g



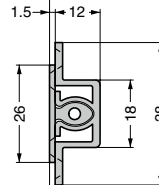
[Surface Mount (Horizontal) Type]

Knuckle Catch
 JC-T50 (P.641)
 Push-in Force: 32 N (3.3 kgf)
 Pulling Force: 37 N (3.8 kgf)
 Weight: 3 g

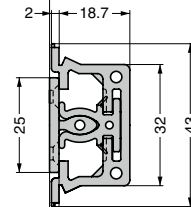


[Mortise Type]

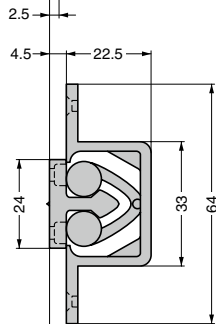
Knuckle Catch
 JCU (P.643)
 Push-in Force: 19.6 N (2 kgf)
 Pulling Force: 22.5 N (2.3 kgf)
 Weight: 3.5 g



Knuckle Catch
 JCU-F (P.644)
 Push-in Force: 19.6 N (2 kgf)
 Pulling Force: 19.6 N (2 kgf)
 Weight: 5.2 g



Rotary Catch
 RCU (P.642)
 Push-in Force: 29.4 N (3 kgf)
 Pulling Force: 31.4 N (3.2 kgf)
 Weight: 8 g



Approx. 50 mm

※Two surface mount types available: vertical or horizontal to mounting surface.