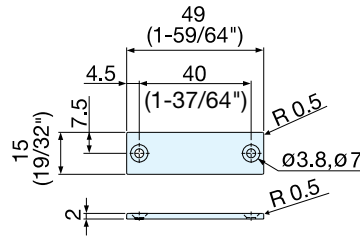


STAINLESS STEEL COUNTERPLATE



MC-JM49



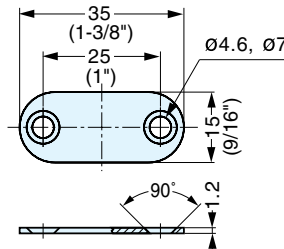
- Special plate for MC-JM magnetic catches.
- Equivalent to 304 stainless steel, ideal for applications where rust is an issue.
- High-corrosion resistant.

Item No.	Weight (g)	Box (pcs)	Carton (pcs)	Material	Finish
MC-JM49	10	100	1000	304 Stainless Steel (Equivalent)	Plain

COUNTERPLATE



MC-YN001U

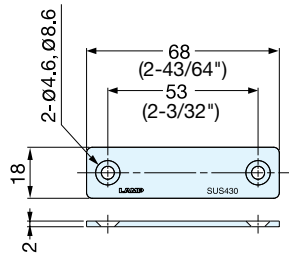


Item No.	Weight (g)	Box (pcs)	Material	Finish
MC-YN001U	4	5000	Steel	Nickel

STAINLESS STEEL COUNTERPLATE



AS-68



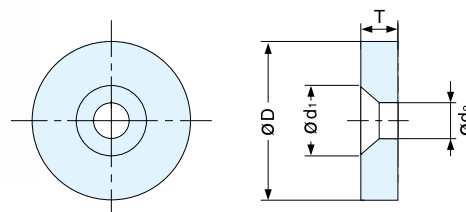
- Special plate for MC-JM magnetic catches.
- 430 stainless steel provides corrosion resistance.

Item No.	Weight (g)	Box (pcs)	Carton (pcs)	Material	Finish
AS-68	17	100	1000	430 Stainless Steel	Plain

COUNTERPLATE



W SERIES



Item No.	T	D	d ₁	d ₂	Weight (g)	Box (pcs)	Carton (pcs)	Material	Finish
W4	2.5 (3/32")	12 (15/32")	6	3.4	1.7	1000	10000	Steel	Chromate (W4)
W12	3.0 (1/8")	15 (19/32")	8	4.0	3.3	600	3000		Nickel (W12)