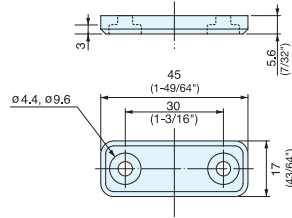


SEALED COUNTERPLATE



MC-JMP45



- Hermetically sealed strike eliminates metal particles when applied with MC-JM magnetic catches.
- Same design as MC-JM45WT, MC-JM45BL - Blue marking on the back side to distinguish strike plate from magnet.
- Note: Only MC-JMPWT is NSF certified

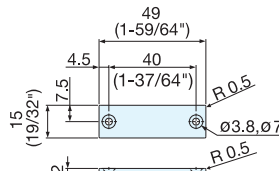
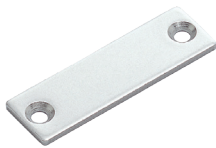
Item No.		Weight (g)	Box (pcs)	Carton (pcs)
MC-JMP45WT	MC-JMP45BL	8.5	100	1000

Part Name	Material	Finish/Color
Body	Polypropylene	White (WT)/Black (BL)
Plate	Steel	Plain

STAINLESS STEEL COUNTERPLATE



MC-JM49



- Special plate for MC-JM magnetic catches.
- Equivalent to 304 stainless steel, ideal for applications where rust is an issue.
- High corrosion resistant.

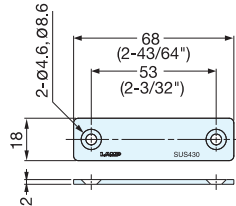
Item No.	Weight (g)	Box (pcs)	Carton (pcs)
MC-JM49	10	100	1000

Material	Finish
Stainless Steel	Plain

STAINLESS STEEL COUNTERPLATE



AS-68



- Special plate for MC-JM magnetic catches.
- 430 stainless steel provides corrosion resistance.

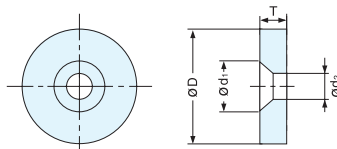
Item No.	Weight (g)	Box (pcs)	Carton (pcs)
AS-68	17	100	1000

Material	Finish
430 Stainless Steel	Plain

COUNTERPLATE



W SERIES

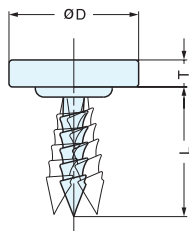


Item No.	T	D	d ₁	d ₂	Weight (g)	Box (pcs)	Carton (pcs)
W4	2.5 (3/32")	12 (15/32")	6	3.4	1.7	1000	10000
W12	3.0 (1/8")	15 (19/32")	8	4.0	3.3	600	3000

Material	Finish
Steel	Chromate (W4)
	Nickel (W12)

STRIKE

Z4



Item No.	T	D	L	Weight (g)	Box (pcs)	Carton (pcs)
Z4	2.5 (3/32")	12 (15/32")	12 (15/32")	2	1000	4000

Material	Finish
Steel	Nickel