

## STAINLESS STEEL COMPRESSION DRAW LATCH

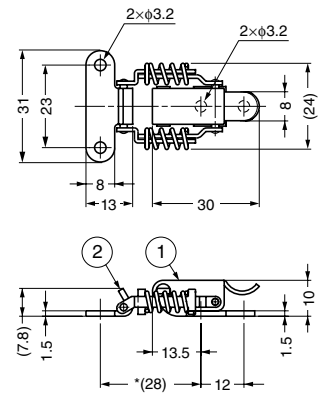
STAINLESS 304 STEEL

SCC-30



### Features

- Made entirely out of stainless steel
- Built in spring



\*Dimension shown is in case of clamping force "0".

| Item Code   | Item Name | Weight | Box     | Carton    |
|-------------|-----------|--------|---------|-----------|
| 120-040-693 | SCC-30    | 15 g   | 100 pcs | 1,000 pcs |

| No. | Part Name     | Material                 | Finish   |
|-----|---------------|--------------------------|----------|
| ①   | Body          | Stainless Steel (SUS304) | Polished |
| ②   | Counter Plate | Stainless Steel (SUS304) | Polished |

## STAINLESS STEEL COMPRESSION DRAW LATCH

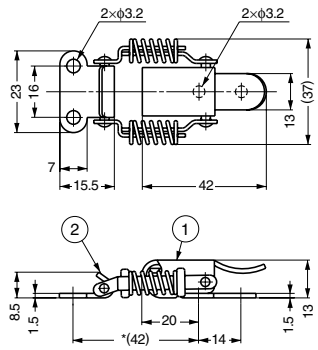
STAINLESS 304 STEEL

SCC-40



### Features

- Made entirely out of stainless steel
- Built in spring



\*Dimension shown is in case of clamping force "0".

| Item Code   | Item Name | Weight | Box    | Carton  |
|-------------|-----------|--------|--------|---------|
| 120-043-980 | SCC-40    | 36 g   | 40 pcs | 400 pcs |

| No. | Part Name     | Material                 | Finish   |
|-----|---------------|--------------------------|----------|
| ①   | Body          | Stainless Steel (SUS304) | Polished |
| ②   | Counter Plate | Stainless Steel (SUS304) | Polished |

## STAINLESS STEEL COMPRESSION DRAW LATCH

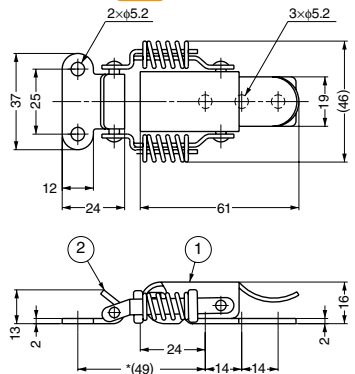
STAINLESS 304 STEEL

SCC-60



### Features

- Made entirely out of stainless steel
- Built in spring



\*Dimension shown is in case of clamping force "0".

| Item Code   | Item Name | Weight | Box    | Carton  |
|-------------|-----------|--------|--------|---------|
| 120-043-981 | SCC-60    | 75 g   | 20 pcs | 200 pcs |

| No. | Part Name     | Material                 | Finish   |
|-----|---------------|--------------------------|----------|
| ①   | Body          | Stainless Steel (SUS304) | Polished |
| ②   | Counter Plate | Stainless Steel (SUS304) | Polished |