

STAINLESS STEEL LEVELING GLIDE

TEST METHOD 14

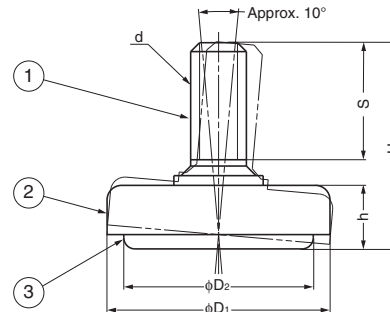
STAINLESS 304 STEEL

MKPS



Features

- 304 stainless steel constructions is ideal for humid environments or applications where corrosion is an issue.
- Swivels approximately 10° to compensate for uneven floors.
- Double structure of cover/bolt and base allows easy height adjustment without lifting the leg.



No.	Part Name	Material	Finish
①	Threaded Bolt	Stainless Steel	Satin
②	Cover	Stainless Steel (SUS304)	Satin
③	Base	Stainless Steel (SUS304)	Plain

Item Code	Item Name	d	D ₁	D ₂	H	h	S	Load Capacity N	Load Capacity kgf	Weight	Box	Carton
200-141-320	MKPS-32M10	M10	32	27	36	11	21	1960 N	200 kgf	50 g	60 pcs	480 pcs
200-141-321	MKPS-32N3	W3/8	32	27	36	11	21	1960 N	200 kgf	50 g	60 pcs	480 pcs
200-141-322	MKPS-40M10	M10	40	34	37	11.4	21	3136 N	320 kgf	70 g	40 pcs	320 pcs
200-141-323	MKPS-40N3	W3/8	40	34	37	11.4	21	3136 N	320 kgf	70 g	40 pcs	320 pcs
200-141-324	MKPS-50M10	M10	50	44	37.5	11.5	21	3528 N	360 kgf	95 g	30 pcs	240 pcs
200-141-325	MKPS-50N3	W3/8	50	44	37.5	11.5	21	3528 N	360 kgf	95 g	30 pcs	240 pcs
200-141-326	MKPS-60M12	M12	60	54	51.5	11.5	35	3920 N	400 kgf	140 g	15 pcs	120 pcs

STAINLESS STEEL LEVELING GLIDE

TEST METHOD 14

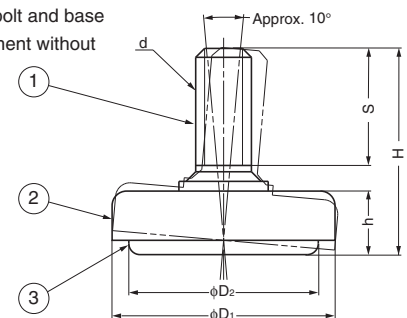
STAINLESS 304 STEEL

MKRS



Features

- 304 stainless steel constructions is ideal for humid environments or applications where corrosion is an issue.
- Leveling glide with elastomer base to prevent from skidding and scratching the floor.
- Swivels approximately 10° to compensate for uneven floors.
- Double structure of cover/bolt and base allows easy height adjustment without lifting the leg.



No.	Part Name	Material	Finish/Colour
①	Threaded Bolt	Stainless Steel	Satin
②	Cover	Stainless Steel (SUS304)	Satin
③	Base	As below	Black

Item Code	Item Name	Base	d	D ₁	D ₂	H	h	S	Load Capacity N	Load Capacity kgf	Weight	Box	Carton
200-141-328	MKRS-32M10	Elastomer (TPO)	M10	32	27	36	11	21	392 N	40 kgf	50 g	60 pcs	480 pcs
200-141-329	MKRS-32N3	Elastomer (TPO)	W3/8	32	27	36	11	21	392 N	40 kgf	50 g	60 pcs	480 pcs
200-141-330	MKRS-40M10	Elastomer (TPO)	M10	40	34	37	11.4	21	784 N	80 kgf	70 g	40 pcs	320 pcs
200-141-331	MKRS-40N3	Elastomer (TPO)	W3/8	40	34	37	11.4	21	784 N	80 kgf	70 g	40 pcs	320 pcs
200-141-332	MKRS-50M10	Elastomer (TPO)	M10	50	44	37.5	11.5	21	980 N	100 kgf	90 g	30 pcs	240 pcs
200-141-333	MKRS-50N3	Elastomer (TPO)	W3/8	50	44	37.5	11.5	21	980 N	100 kgf	90 g	30 pcs	240 pcs
200-141-334	MKRS-60M12	Nitrile Rubber (NBR)	M12	60	54	51.5	11.5	35	980 N	100 kgf	150 g	15 pcs	120 pcs
200-141-335	MKRS-70M14	Nitrile Rubber (NBR)	M14	70	64	51.5	11.5	35	980 N	100 kgf	200 g	15 pcs	120 pcs