

## LEVELING GLIDE

## ADCR

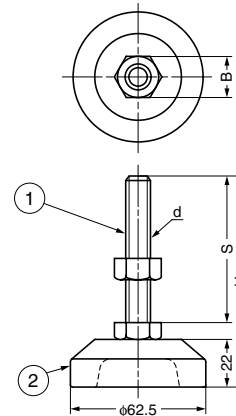


### Features

Bottom cover made of nitrile rubber to prevent from scratching the floor.

### Sold Separately

Washer : ADZ (P.784)



No.	Part Name	Material	Finish/Colour
①	Threaded Bolt	Steel	Clear Zinc Chromate
②	Cover	Nitrile Rubber (NBR)	Black

Item Code	Item Name	H	S	B	d	Load Capacity N	Load Capacity kgf	Weight	Carton
200-140-508	ADCR60-12- 50	80	50	19	M12	6664 N	680 kgf	332 g	35 pcs
200-140-072	ADCR60-20-180	215	180	30	M20	14112 N	1440 kgf	794 g	15 pcs

## STAINLESS STEEL LEVELING GLIDE

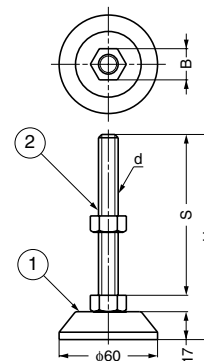


## ADCS, ADC



### Features

ADC (Steel) : Cross-recessed bottom allows easy installation with Philips screw driver.



### ADC (Steel)

No.	Part Name	Material	Finish
①	Body	Steel	Clear Zinc Chromate
②	Threaded Bolt	Steel	Clear Zinc Chromate

### ADCS (Stainless Steel)

No.	Part Name	Material	Finish
①	Body	Stainless Steel (SUS304)	Satin
②	Threaded Bolt	Stainless Steel (SUS304)	Satin

Item Code	Item Name	H	S	B	d	Load Capacity	Load Capacity	Weight	Carton
200-141-533	ADC60-12-120	145	120	19	M12	2940 N	300 kgf	355 g	35 pcs
200-141-535	ADC60-16-100	127	100	24	M16	5488 N	560 kgf	440 g	25 pcs
200-141-536	ADC60-16-130	157	130	24	M16	5488 N	560 kgf	480 g	25 pcs
200-141-538	ADC60-16-180	207	180	24	M16	5488 N	560 kgf	540 g	20 pcs
200-141-540	ADC60-20-100	130	100	30	M20	8624 N	880 kgf	580 g	20 pcs
200-141-541	ADC60-20-130	160	130	30	M20	8624 N	880 kgf	640 g	20 pcs
200-141-542	ADC60-20-150	180	150	30	M20	8624 N	880 kgf	680 g	20 pcs
200-140-071	ADC60-20-180	210	180	30	M20	8624 N	880 kgf	740 g	15 pcs

Item Code	Item Name	H	S	B	d	Load Capacity	Load Capacity	Weight	Carton
200-141-220	ADCS60-12-120	145	120	19	M12	2940 N	300 kgf	365 g	35 pcs
200-141-222	ADCS60-16-100	127	100	24	M16	5488 N	560 kgf	440 g	25 pcs
200-141-223	ADCS60-16-130	157	130	24	M16	5488 N	560 kgf	480 g	25 pcs
200-141-225	ADCS60-16-180	207	180	24	M16	5488 N	560 kgf	550 g	20 pcs
200-141-226	ADCS60-20-100	130	100	30	M20	8624 N	880 kgf	590 g	20 pcs
200-141-227	ADCS60-20-130	160	130	30	M20	8624 N	880 kgf	650 g	20 pcs
200-141-229	ADCS60-20-180	210	180	30	M20	8624 N	880 kgf	750 g	15 pcs