

# STAINLESS STEEL LEVELING GLIDE



## ADPS, ADP

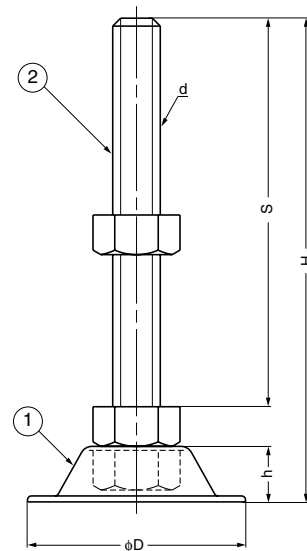
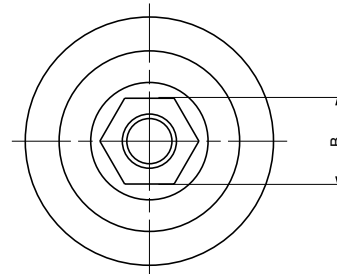


### Features

- Hexagon nut at the bottom for easy installation.
- 304 Stainless steel type or Steel type.

### Option (P.784)

- Washer : ADZS (Stainless steel)
- Washer : ADZ (Steel)



No.	Part Name	Material	Finish
①	Body (ADPS)	Stainless Steel (SUS304)	Satin
①	Body (ADP)	Steel	Clear Zinc Chromate
②	Threaded Bolt (ADPS)	Stainless Steel (SUS304)	Satin
②	Threaded Bolt (ADP)	Steel	Clear Zinc Chromate

### ADPS

Item Code	Item Name	d	D	H	h	S	B	Load Capacity N	Load Capacity kgf	Weight	Carton
200-141-182	ADPS37- 8- 60	M 8	37	76	10.5	60	13	2940 N	300 kgf	56 g	200 pcs
200-141-183	ADPS37-10- 50	M10	37	67.5	10.5	50	17	2940 N	300 kgf	78 g	200 pcs
200-141-184	ADPS55-12-100	M12	55	122	14	100	19	2940 N	300 kgf	174 g	100 pcs
200-141-185	ADPS55-12-120	M12	55	142	14	120	19	2940 N	300 kgf	184 g	80 pcs
200-141-186	ADPS55-12-150	M12	55	172	14	150	19	2940 N	300 kgf	210 g	70 pcs
200-141-187	ADPS75-16-100	M16	75	128	18	100	24	5488 N	560 kgf	318 g	50 pcs
200-141-188	ADPS75-16-130	M16	75	158	18	130	24	5488 N	560 kgf	358 g	40 pcs
200-141-189	ADPS75-16-150	M16	75	178	18	150	24	5488 N	560 kgf	382 g	30 pcs
200-141-190	ADPS75-16-180	M16	75	208	18	180	24	5488 N	560 kgf	426 g	30 pcs
200-141-191	ADPS75-20-100	M20	75	131	18	100	30	8624 N	880 kgf	490 g	40 pcs
200-141-192	ADPS75-20-130	M20	75	161	18	130	30	8624 N	880 kgf	553 g	30 pcs
200-141-194	ADPS75-20-180	M20	75	211	18	180	30	8624 N	880 kgf	655 g	25 pcs

### ADP

Item Code	Item Name	d	D	H	h	S	B	Load Capacity N	Load Capacity kgf	Weight	Carton
200-140-002	ADP37- 8- 50	M 8	37	66	10.5	50	13	2940 N	300 kgf	55 g	200 pcs
200-140-594	ADP37-10- 50	M10	37	67.5	10.5	50	17	2940 N	300 kgf	80 g	200 pcs
200-140-505	ADP55-12- 50	M12	55	72	14	50	19	2940 N	300 kgf	135 g	100 pcs
200-141-520	ADP55-12-100	M12	55	122	14	100	19	2940 N	300 kgf	165 g	100 pcs
200-141-521	ADP55-12-120	M12	55	142	14	120	19	2940 N	300 kgf	180 g	80 pcs
200-141-522	ADP55-12-150	M12	55	172	14	150	19	2940 N	300 kgf	200 g	70 pcs
200-141-523	ADP75-16-100	M16	75	128	18	100	24	5488 N	560 kgf	310 g	50 pcs
200-141-524	ADP75-16-130	M16	75	158	18	130	24	5488 N	560 kgf	350 g	40 pcs
200-141-525	ADP75-16-150	M16	75	178	18	150	24	5488 N	560 kgf	375 g	30 pcs
200-141-526	ADP75-16-180	M16	75	208	18	180	24	5488 N	560 kgf	410 g	30 pcs