

SWAY-FOOT LEVELLING GLIDE MDSF

LOAD CAPACITY 2000~7500 N

INSTRUCTION

VIDEO



- Suitable for server racks, precision instruments, medical equipment, cabinets and furniture, etc.
- The base isolation structure absorbs vibrations and shocks.
- Reduces installation cost.
- Reduces the risk of falling furniture or equipment.
- Can be used on raised floor.
- Applied to server systems of major manufacturers.
- Sold in set of 4 pcs.
- Bolt lengths and screw diameters can be made to order.

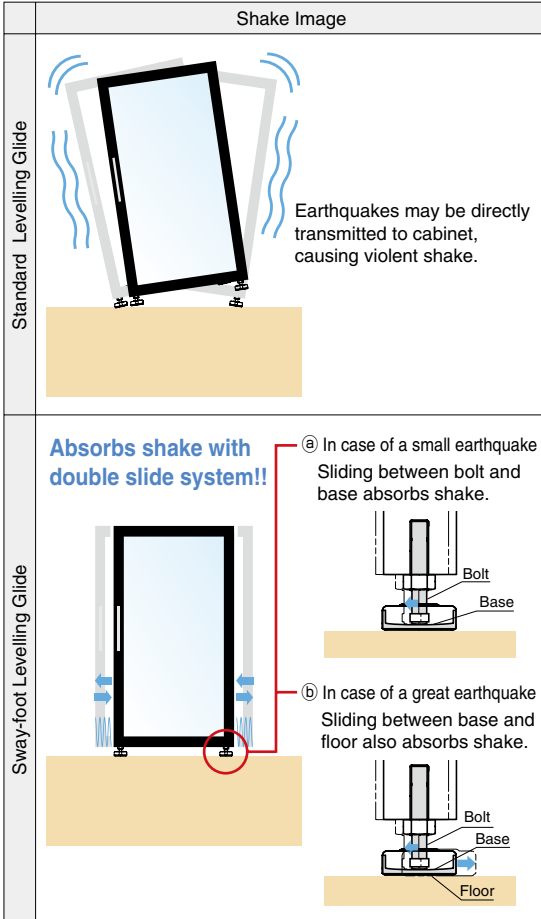
[Applications]

- Server racks, medical equipment, semiconductor manufacturing equipment, measuring instruments, fixtures for school facilities, kitchen appliances, furniture, fixtures for works of art, and other precision instruments, etc.

[Remarks]

- Keep 30cm or above away from structures and places with large flow of people.
- Use on a level floor.
- When installing the bolt to a cabinet, ensure that it is perpendicular to the base.
- The cabinet supported by this product may move during earthquake, depending on how the earthquake shakes.
- Do not touch the sliding surface as it is coated with lubricant.

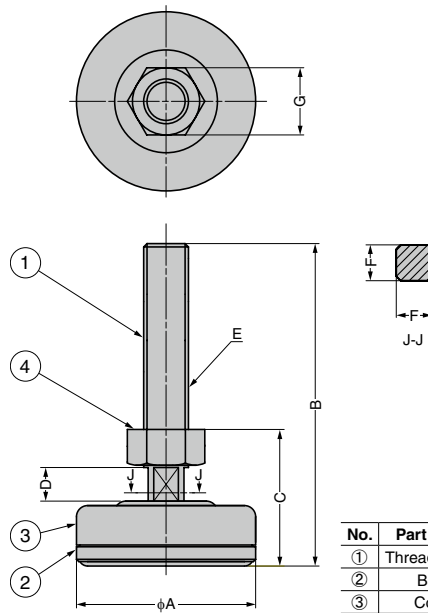
[Comparison with Standard Levelling Glides]



[Parts Structure (For 1 pc)]



You can see the performance evaluation test where the Great Hanshin Awaji Earthquake 7.3 magnitude is completely reproduced.



No.	Part Name	Material	Finish
①	Threaded Bolt	Steel	Nickel
②	Base	Steel/Teflon	
③	Cover	Nitrile Rubber (NBR)	-
④	Hex Nut	Steel	Clear Zinc Chromate (Trivalent)

RevS	CAD	Item Code	Item Name	A	B	C	D	E	F	G	Max. Size	Load Capacity N/4 pcs	Load Capacity kgf/4 pcs	Weight (g)	Box (sets)	Carton (sets)
G	SD	200-014-807	MDSF58-10-40	58	65.5	34.5	7.5	M10	8	17	W410×D630×H390	2000	204	180	1	-
G	SD	200-014-805	MDSF58-16-80		114	48	10.5	M16	13	24	W730×D730×H1460	5000	510	300	1	-
G	SD	200-014-806	MDSF80-20-100	80	144	61	15	M20	16	30	W1000×D1000×H2000	7500	765	580	1	-

4 pcs make a set.

EARTHQUAKE PROOF PRODUCTS DIGEST



Stainless Steel Lever Latch LL-66S

1

Latch prevents door from opening unexpectedly.



BLL-100

BLL-45



BLT-120

BLT-45

Spring Loaded Bar Latch BLL & BLT



Angle Bracket XL-SA01

2

Can be used as falling prevention metal fittings for fixing cabinet or shelf to wall.



Push Knob Latch TLP-S

Refer to 1 : P.661, 2 : P.575