

## TWIN WHEEL CASTER (PLATE TYPE)

## FP55P



FP55PR

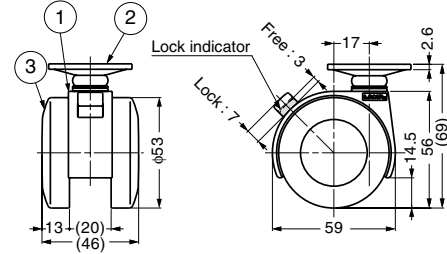
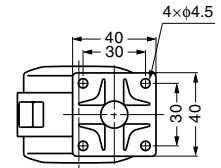
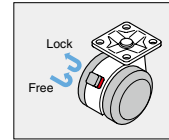
FP55PSR

### Features

Caster with high quality polyamide body.  
Excellent durability, chemical / weather / wear resistance.



Caster bracket  
FA55-FIX to lock  
swivel available  
(P.740).



Item Code	Item Name	Type	Load Capacity N	Load Capacity kgf	Weight	Box	Carton
200-133-268	FP55PSR	With Brake	490 N	50 kgf	148 g	4 pcs	72 pcs
200-133-273	FP55PR	Without Brake	490 N	50 kgf	144 g	4 pcs	72 pcs

No.	Part Name	Material	Finish/Colour
①	Body	Polyamide (PA)	Black
②	Plate	Steel	Zinc Chromate
③	Wheel	Polyamide (PA)	Black

## TWIN WHEEL CASTER (THREADED BOLT TYPE)

## FP55N

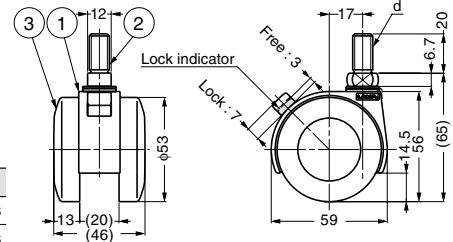
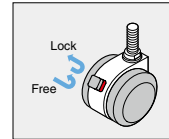


FP55N3R

FP55N3SR

### Features

Caster with high quality polyamide body.  
Excellent durability, chemical / weather / wear resistance.



Item Code	Item Name	Type	d	Load Capacity N	Load Capacity kgf	Weight	Box	Carton
200-133-269	FP55N 3SR	With Brake	W3/8	490 N	50 kgf	126 g	4 pcs	72 pcs
200-133-274	FP55N 3R	Without Brake	W3/8	490 N	50 kgf	121 g	4 pcs	72 pcs
200-133-270	FP55N10SR	With Brake	M10	490 N	50 kgf	126 g	4 pcs	72 pcs
200-133-275	FP55N10R	Without Brake	M10	490 N	50 kgf	121 g	4 pcs	72 pcs
200-133-271	FP55N12SR	With Brake	M12	490 N	50 kgf	126 g	4 pcs	72 pcs
200-133-276	FP55N12R	Without Brake	M12	490 N	50 kgf	121 g	4 pcs	72 pcs

No.	Part Name	Material	Finish/Colour
①	Body	Polyamide (PA)	Black
②	Threaded Bolt	Steel	Zinc Chromate
③	Wheel	Polyamide (PA)	Black

## TWIN WHEEL CASTER (INSERT BOLT TYPE)

## FP55S



FP55SR

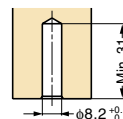
FP55SSR

### Features

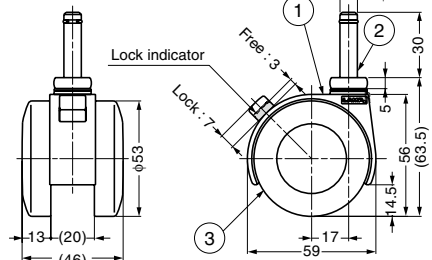
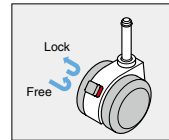
Caster with high quality polyamide body.  
Excellent durability, chemical / weather / wear resistance.

### Parts Included

Socket



Cut out dimensions  
(w/o using the socket)



Item Code	Item Name	Type	Load Capacity N	Load Capacity kgf	Weight	Box	Carton
200-130-907	FP55SSR	With Brake	490 N	50 kgf	128 g	4 pcs	72 pcs
200-130-908	FP55SR	Without Brake	490 N	50 kgf	123 g	4 pcs	72 pcs

No.	Part Name	Material	Finish/Colour
①	Body	Polyamide (PA)	Black
②	Insert Bolt	Steel	Zinc Chromate
③	Wheel	Polyamide (PA)	Black
④	Socket	Steel	Zinc Chromate