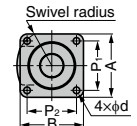


LOW PROFILE HEAVY DUTY CASTER UHG Plate Type

LOAD CAPACITY 4000~8000 N



- Small heavy duty type with low profile.
- High performance bearing reduces starting force.
- Carburised and quenched main metal parts provide outstanding durability and load capacity.



[Phenol Wheel] Item Name Suffix "PB"



High surface hardness and excellent resistance against oil, heat and compression.

[MC Polyamide Wheel] Item Name Suffix "MC"



Excellent load capacity, friction resistance, heat resistance and cold resistance and low starting resistance provide low probability of floor damage.

[Conductive MC Polyamide Wheel] Item name suffix "MCE"



Conductive MC polyamide wheel can play the role of earthing.

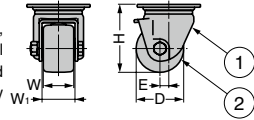
[Reinforced Polyamide Wheel] Item name suffix "GFB"



Excellent load capacity and impact resistance compared with polyamide wheel.

[Applications]

- Medical equipment, automatic equipment, semiconductor equipment, financial equipment, other heavy equipment required for space-saving, long-term fixed heavy equipment, etc.



No.	Part Name	Material	Finish/Colour
①	Body	Steel (SPHC)	Clear Zinc Chromate (Trivalent)
②	Wheel	Item Name Suffix "PB" : Phenol Resin (PF)	Black
		Item Name Suffix "MC" : MC Reinforced (PA)	Blue
		Item Name Suffix "MCE" : Conductive MC Reinforced (PA)	Black
		Item Name Suffix "GFB" : Reinforced (PA)	

RoHS	CAD	Item Code	Item Name	Wheel Material	D	H	E	W	W ₁	A	B	P ₁	P ₂	d	Swivel Radius	Load Capacity N/pc	Load Capacity kg/pc	Weight (g)	Box (pcs)	Carton (pcs)		
☑	-	200-130-840	UHG-50-PB	Phenol Resin (PF)	50	79	12	38	42	84	84	64	64	8.5	49	4000	408	814	20	-		
☑	☑	200-130-290	UHG-50-MC	MC Polyamide														810	20	-		
☑	-	200-130-291	UHG-50-MCE	Conductive MC Reinforced Polyamide														815	20	-		
☑	-	200-130-841	UHG-65-PB	Phenol Resin (PF)	65	97	14	48	51.5	100	100	78	78	10.5	57	5000	510	1581	12	-		
☑	☑	200-130-292	UHG-65-GFB	Reinforced Polyamide														4000	408	1469	12	-
☑	☑	200-130-293	UHG-65-MC	MC Polyamide														6000	612	1600	12	-
☑	-	200-130-294	UHG-65-MCE	Conductive MC Reinforced Polyamide	75	107	20	51.5	150	85	80	60	9.0	62	8000	816	1600	12	-			
☑	☑	200-130-842	UHG-75-PB	Phenol Resin (PF)													1677	12	-			
☑	☑	200-130-295	UHG-75-GFB	Reinforced Polyamide													5000	510	1521	12	-	
☑	-	200-130-296	UHG-75-MC	MC Polyamide	80	120	20	48	51.5	100	85	80	60	9.0	62	8000	816	1800	12	-		
☑	-	200-130-297	UHG-75-MCE	Conductive MC Reinforced Polyamide														1670	12	-		
☑	-	200-130-298	UHG-80-MC	MC Polyamide	100	140	20	48	51.5	100	110	121	59	13.0	72	8000	816	1695	12	-		
☑	-	200-139-432	UHG-100-MC															2145	8	-		

LOW PROFILE HEAVY DUTY CASTERS HG Plate Type

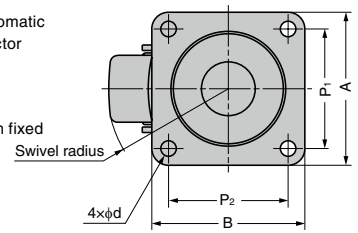
LOAD CAPACITY 1600~3200 N



- Small heavy duty type with low profile.
- High performance bearing reduces starting force (HG-50GNB excluded).
- Carburised and quenched main metal parts provide outstanding durability and load capacity.

[Applications]

- Medical equipment, automatic equipment, semiconductor equipment, financial equipment, other heavy equipment required for space-saving, long-term fixed heavy equipment, etc.



[Reinforced Polyamide Wheel] Item Name Suffix "GNB"



Excellent load capacity and impact resistance compared with polyamide wheel.

[Phenol Wheel] Item Name Suffix "PB"



High surface hardness and excellent resistance against oil, heat and compression.

No.	Part Name	Material	Finish/Colour
①	Body	Steel (SPHC)	Clear Zinc Chromate (Trivalent)
②	Wheel	Item Name Suffix "GNB" : Reinforced (PA)	Black
		Item Name Suffix "PB" : Phenol Resin (PF)	

RoHS	CAD	Item Code	Item Name	Wheel Material	D	H	E	W ₁	W ₂	A	B	P ₁	P ₂	d	Swivel Radius	Load Capacity N/pc	Load Capacity kg/pc	Weight (g)	Box (pcs)	Carton (pcs)
☑	☑	200-130-399	HG-50GNB	Reinforced Polyamide	50	68	25	28	30	64	64	50	50	6.5	51	1600	163.2	320	36	-
☑	☑	200-130-400	HG-65PB	Phenol Resin (PF)	65	92	22	38	42	90	90	71	71	10.5	57	3000	306	880	20	-
☑	☑	200-130-401	HG-75PB		75	106	22	38	42	90	90	71	71	10.5	61	3200	326.4	970	20	-

