

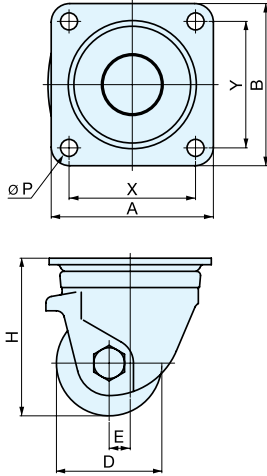
LOW PROFILE HEAVY DUTY CASTER

LOAD CAPACITY
163-326 kg
359-719 lbs

HG



- Low profile and heavy duty up to 255 kg (561 lbs), ideal for manufacturing equipment.
- Hardened frame for maximum rigidity and strength.
- Sealed ball bearing swivel assembly provides smooth and long-term service.
- Hexavalent chromium free. Using trivalent chromium for RoHS compliance.
- Two wheel types:
 - Phenolic
 - Reinforced Nylon with ball bearing spindle
- Wheel brake available on special order.



Part Name	Material	Finish
Body	Steel	Clear Zinc Chromate (Trivalent Chromium)
Mounting Plate		
Wheel	Reinforced Nylon (GNB)	Black
	Phenolic Resin (PB)	

Item No.	Bearing in wheels	D	Wheel Width	H	A
HG-50GNB	Without Bearing	50 (1-31/32")	28 (1-7/64")	68 (2-43/64")	50 (1-31/32")
HG-65PB	With Bearing	65 (2-9/16")	38 (1-1/2")	92 (3-5/8")	90 (3-35/64")
HG-75PB		75 (2-61/64")		106 (4-11/64")	

Item No.	B	X	Y	P	E	Swivel Radius	Load Capacity (kg)	Weight (g)	Box (pcs)	Carton (pcs)
HG-50GNB	50	64	64	6.5	25	51	163 (359 lbs)	320	60	600
HG-65PB						57	306 (675 lbs)	880	20	200
HG-75PB	90	71	71	10.5	22	61	326 (719 lbs)	970	12	120

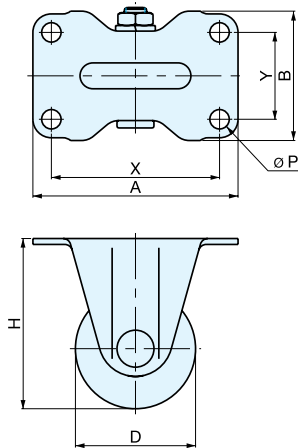
LOW PROFILE HEAVY DUTY CASTER

LOAD CAPACITY
163-255 kg
359-561 lbs

HR



- Low profile and heavy duty up to 255kg (561 lbs), ideal for manufacturing equipment.
- Hardened frame for maximum rigidity and strength.
- Hexavalent chromium free. Using trivalent chromium for RoHS compliance.
- Two wheel types:
 - Phenolic
 - Reinforced Nylon with ball bearing spindle



Part Name	Material	Finish
Body	Steel	Clear Zinc Chromate (Trivalent Chromium)
Mounting Plate		
Wheel	Reinforced Nylon(GNB)	Black
	Phenolic Resin(PB)	

Item No.	Bearing in wheels	D	Wheel Width	H	A
HR-50GNB	Without Bearing	50 (1-31/32")	28 (1-7/64")	68 (2-43/64")	80 (3-5/32")
HR-65PB	With Bearing	65 (2-9/16")	38 (1-1/2")	92 (3-5/8")	111 (4-3/8")
HR-75PB		75 (2-61/64")		106 (4-11/64")	123 (4-27/32")

Item No.	B	X	Y	P	Load Capacity (kg)	Weight (g)	Box (pcs)	Carton (pcs)
HR-50GNB	50	66	36	6.5	163 (359 lbs)	200	60	600
HR-65PB	67	91	47	10.5	234 (516 lbs)	615	12	120
HR-75PB	72	103	52		255 (561 lbs)	725		