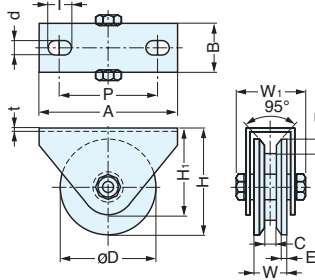


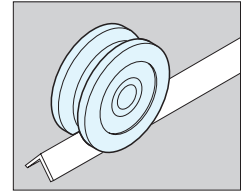
STAINLESS STEEL BEARING ROLLER (HEAVY DUTY/V-SHAPE)



JS300



- V-shaped roller.
- Sealed bearing ideal for outdoor environment.
- Bracket has holes for fasteners or it also can be welded



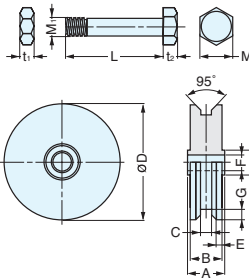
Item No.	Load Capacity (kg/2pcs)	D	W	W ₁	A	B	C	E
JS300-50V	400 (880 lbs)	50 (1-31/32")	20 (25/32")	47 (1-27/32")	100 (3-15/16")	30 (1-3/16")	7.5 (19/64")	3.5 (9/64")
JS300-60V	500 (1100 lbs)	60 (2-23/64")			120 (4-23/32")			
JS300-75V	650 (1430 lbs)	75 (2-61/64")						
JS300-90V	1200 (2640 lbs)	90 (3-35/64")						
JS300-110V	1400 (3080 lbs)	110 (4-21/64")	24 (15/16")	53 (2-3/32")	145 (5-45/64")	34 (1-11/32")	10.5 (13/32")	4.6 (3/16")
JS300-150V	2200 (4840 lbs)	150 (5-29/32")	43 (1-11/16")	88 (3-15/32")	250 (9-27/32")	57 (2-1/4")	13.0 (33/64")	8.0 (5/16")
JS300-200V	2800 (6160 lbs)	200 (7-7/8")	50 (1-31/32")	96 (3-25/32")	290 (11-27/64")	70 (2-3/4")	15.0 (19/32")	7.0 (9/32")

Item No.	F	H	H ₁	d	I	P	t	Weight (kg)	
JS300-50V	7 (9/32")	62.0 (2-7/16")	57.0 (2-1/4")	11 (7/16")	15 (19/32")	75 (2-61/64")	3 (1/8")	0.5	
JS300-60V		67.0 (2-41/64")				85 (3-11/32")		0.6	
JS300-75V		87.5 (3-7/16")	95 (3-47/64")			1.2			
JS300-90V		95.0 (3-47/64")	114 (4-31/64")			2.0			
JS300-110V	8 (5/16")	120.0 (4-23/32")	93.5 (3-11/16")	20 (25/32")	35 (1-3/8")	185 (7-9/32")	4 (5/32")	6.8	
JS300-150V	18 (45/64")	165.0 (6-1/2")	137.0 (5-25/64")			216 (8-1/2")		6 (15/64")	13.0
JS300-200V	20 (25/32")	215.0 (8-15/32")	160.0 (6-19/64")						

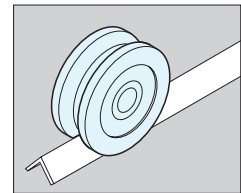
STAINLESS STEEL ROLLER (HEAVY DUTY/V-SHAPE)



JS310



- V-shaped roller wheel for JS300.
- Sealed bearing ideal for outdoor environment.



*Measurement includes spring washer thickness

Item No.	D	A	B	C	E	F
JS310-50V	50 (1-31/32")	24 (15/16")	20 (25/32")	7.5 (19/64")	3.5 (9/64")	10 (25/64")
JS310-60V	60 (2-23/64")					
JS310-75V	75 (2-61/64")					
JS310-90V	90 (3-35/64")					
JS310-110V	110 (4-21/64")	28 (1-7/64")	24 (15/16")	10.5 (13/32")	4.6 (3/16")	12 (15/32")
JS310-150V	150 (5-29/32")	*43 (1-11/16")	43 (1-11/16")	13.0 (33/64")	8.0 (5/16")	20 (25/32")
JS310-200V	200 (7-7/8")	*50 (1-31/32")	50 (1-31/32")	15.0 (19/32")	7.0 (9/32")	25 (63/64")

Item No.	F ₁	G	L	M	M ₁	t ₁	t ₂	Weight (kg)
JS310-50V	18 (45/64")	7 (9/32")	40 (37/64")	17 (43/64")	M10 (25/64")	6 (15/64")	7 (9/32")	0.2
JS310-60V								0.3
JS310-75V								0.6
JS310-90V								0.8
JS310-110V	20 (25/32")	8 (5/16")	45 (1-49/64")	19 (3/4")	M12 (15/32")	7 (9/32")	8 (5/16")	1.5
JS310-150V	40 (37/64")	18 (45/64")	75 (2-61/64")	30 (1-3/16")	M20 (25/32")	12 (15/32")	13 (33/64")	4.9
JS310-200V		20 (25/32")	86 (3-25/64")		M24 (15/16")	14 (35/64")	10 (25/64")	9.0