

SHELF SUPPORT

TEST METHOD 9

STAINLESS 430 STEEL

AP-FB20

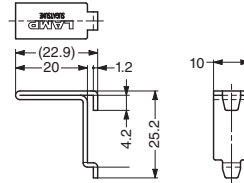


Features

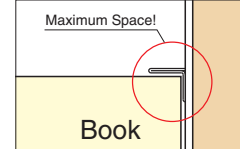
- Mirror & Black colour available.
- For AP-DM and AP-DH (P.175).
- Designed to maximize the space under the shelf.

Sold Separately

- Shelf support cap AP-FC20 (below)
- Shelf holder AP-FA20 (P.177)
- Shelf holder AP-FK20 (P.178)



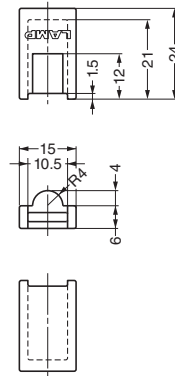
Application Example



Item Code	Item Name	Material	Finish	Load Capacity/4 pcs	Weight(g)	Box(pcs)	Carton(pcs)
120-030-158	AP-FB20	Stainless Steel (SUS430)	Mirror	441 N	45 kgf	5.3	300
120-025-835	AP-FB20BL	Stainless Steel (SUS430)	Black	441 N	45 kgf	5.3	300
120-036-305	AP-FB20WT	Stainless Steel (SUS430)	White	441 N	45 kgf	5.3	300
120-046-443	AP-FB20BZ	Stainless Steel (SUS430)	Bronze	441 N	45 kgf	5.3	300

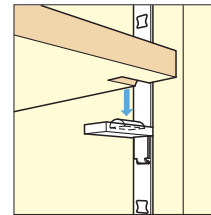
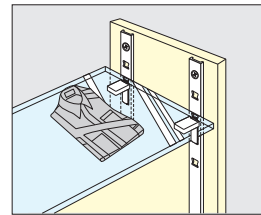
SHELF SUPPORT CAP

AP-FC20



Features

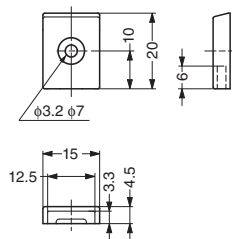
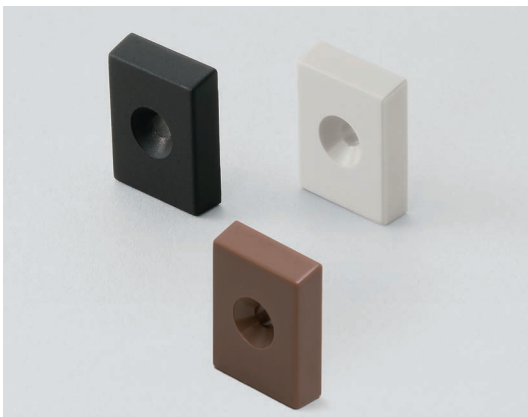
- Light Grey & Black colour available.
- For shelf support AP-FB20.
- Insert the cap with half round shape facing up, and cutout the shelf to prevent from sliding.



Item Code	Item Name	Material	Colour	Weight(g)	Box(pcs)	Carton(pcs)
120-030-159	AP-FC20-LGR	Elastomer (TPE)	Light Grey	1.6	400	4000
120-028-502	AP-FC20-BL	Elastomer (TPE)	Black	1.6	400	4000
120-045-887	AP-FC20-BR	Elastomer (TPE)	Brown	1.6	400	4000

END CAP

AP-EC20



Features

- Light Grey & Black colour available.
- For AP-DM (P.175) and SPE (P.174).

Application Example



Item Code	Item Name	Material	Colour	Weight(g)	Box(pcs)	Carton(pcs)
120-030-157	AP-EC20-LGR	ABS	Light Grey	1.0	400	4000
120-028-503	AP-EC20-BL	ABS	Black	1.0	400	4000
120-045-888	AP-EC20-BR	ABS	Brown	1.0	400	4000