

Zwei L GLASS SHELF CLAMP



ZL-2202

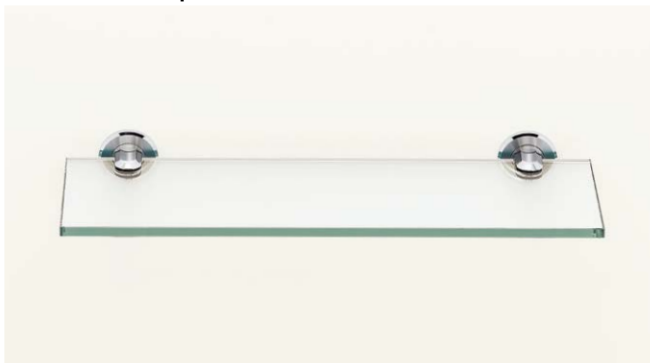
BRACKETS & SHELVING SYSTEM

FOR GLASS

GLASS SHELF CLAMP



Installation Example



Features

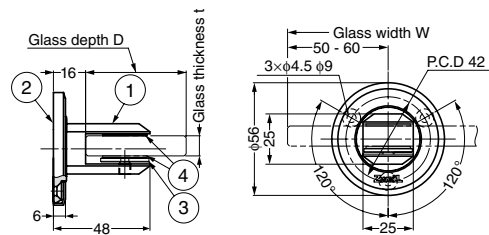
- Made of highly corrosion resistant SUS316
- Ultrapremium Zwei L finish. Zwei L finish: Using top class polishing technology, these products combine the elegance of Satin with the deep glow of a Mirror.
- Designed so that installation screw is not visible after installation

Remarks

- Glass thickness : 8 mm or 10 mm.
- Sold by piece.

Parts Included

- Allen key 2.5
- Countersunk head wood screw 4.1×32
- Plug



| No. | Part Name | Material | Finish/Colour |
|-----|--------------|--------------------------|---------------|
| ① | Clamp | Stainless Steel (SUS316) | Zwei L Finish |
| ② | Base Plate | Stainless Steel (SUS316) | Zwei L Finish |
| ③ | Bumper Plate | Stainless Steel (SUS316) | Zwei L Finish |
| ④ | Bumper | Rubber | Black |

| Item Code | Item Name | Glass Size / 2 pcs | | | Weight | Box |
|-------------|-----------|--------------------|----------|----------|--------|-------|
| | | t | D | W | | |
| 120-031-003 | ZL-2202 | 8 or 10 | Max. 160 | Max. 480 | 480 g | 2 pcs |

Zwei L GLASS SHELF CLAMP



ZL-2203



Installation Example



Features

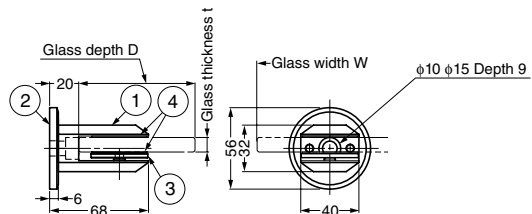
- Made of highly corrosion resistant SUS316
- Ultrapremium Zwei L finish. Zwei L finish: Using top class polishing technology, these products combine the elegance of Satin with the deep glow of a Mirror.
- Designed so that installation screw is not visible after installation

Remarks

- Glass thickness : 8 mm or 10 mm.
- Sold by piece.

Parts Included

- Allen key 6
- Countersunk head wood screw M8×60
- Plug



| No. | Part Name | Material | Finish/Colour |
|-----|--------------|--------------------------|---------------|
| ① | Clamp | Stainless Steel (SUS316) | Zwei L Finish |
| ② | Base Plate | Stainless Steel (SUS316) | Zwei L Finish |
| ③ | Bumper Plate | Stainless Steel (SUS316) | Zwei L Finish |
| ④ | Bumper | Rubber | Black |

| Item Code | Item Name | Glass Size / 2 pcs | | | Weight | Box |
|-------------|-----------|--------------------|----------|----------|--------|------|
| | | t | D | W | | |
| 120-031-004 | ZL-2203 | 8 or 10 | Max. 240 | Max. 640 | 495 g | 1 pc |