

PUSH LOCK Million Lock Series



2300M



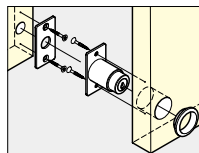
Features

- For sliding doors.
- 1 million key changes available.
- Master Key system available at surcharge.
(Max. 2,520 key changes/Master Key.)
- Keys can be shared with Million Lock Series.

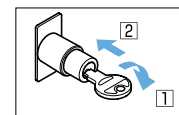
Parts Included

Countersunk head wood screw 2.7 × 16 (SUS)

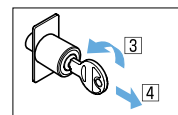
Installation



Lock

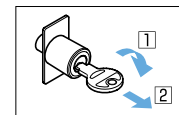


Turn key 90° to the right, push in.

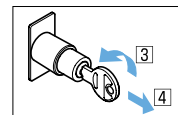


Turn key 90° to the left, and remove.

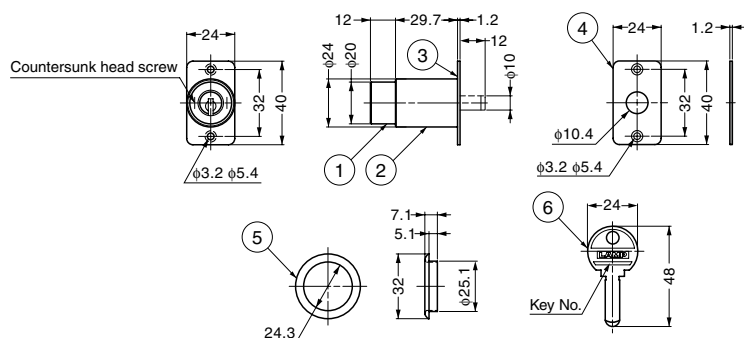
Unlock



Turn key 90° to the right and lock will automatically disengage.



Turn the key 90° back and remove.



No.	Part Name	Material	Finish
①	Body	Brass	Chrome
②	Cylinder Case	Zinc Alloy (ZDC)	Chrome
③	Mounting Plate	Stainless Steel (SUS304)	Polished
④	Strike	Stainless Steel (SUS304)	Polished
⑤	Ring	Brass	Chrome
⑥	Key	Brass	Nickel

Item Code	Item Name	Key Type	Cylinder Diameter	Door Thickness	Weight	Box	Carton
150-022-924	2300M-B	Key Different	φ24	30	100 g	12 pcs	60 pcs
150-001-232	2300M-D	Key Alike	φ24	30	100 g	12 pcs	60 pcs

PUSH LOCK



2400M



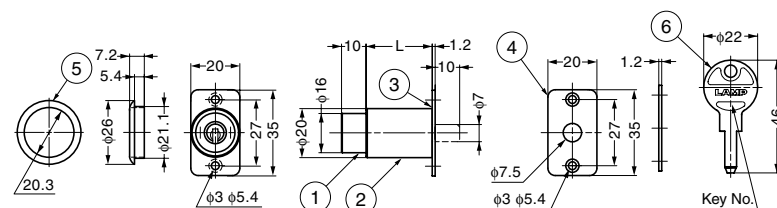
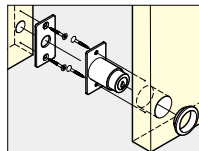
Features

- For sliding doors.
- Push the cylinder to lock without the using key.
- Turn key 45° to the right to unlock. Turn key 45° to the left to lock and remove the key.
- 47,000 key changes available.
- Master Key system available at surcharge.
(Max. 1,000 key changes/Master Key.)

Parts Included

Countersunk head wood screw 2.7 × 16 (SUS)

Installation



No.	Part Name	Material	Finish
①	Body	Brass	Chrome
②	Cylinder Case	Zinc Alloy (ZDC)	Chrome
③	Mounting Plate	Stainless Steel (SUS304)	Polished
④	Strike	Stainless Steel (SUS304)	Polished
⑤	Ring	Brass	Chrome
⑥	Key	Brass	Nickel

Item Code	Item Name	Key Type	Cylinder Diameter	Door Thickness	L	Weight	Box	Carton
150-022-926	2400M-20-B	Key Different	φ20	20	22	65 g	12 pcs	60 pcs
150-001-230	2400M-20-D	Key Alike	φ20	20	22	65 g	12 pcs	60 pcs
150-022-925	2400M-25-B	Key Different	φ20	25	27	70 g	12 pcs	60 pcs
150-001-231	2400M-25-D	Key Alike	φ20	25	27	70 g	12 pcs	60 pcs