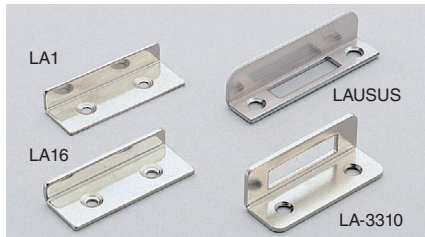


STRIKE

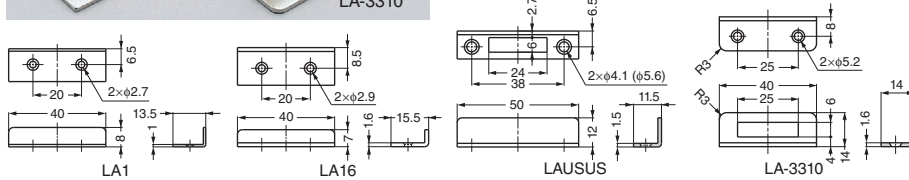
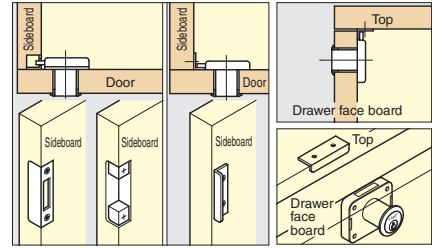
LA



Features

- Optional strike plates (for the place, dead bolt is close to the cabinet edge, or for inset door).
- LA-3310 is for double door application of 3310 series and 3320 series.

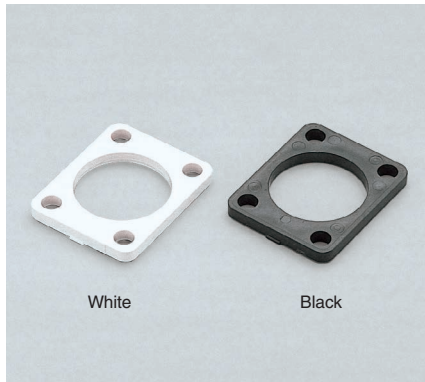
Installation



Item Code	Item Name	Material	Finish	Weight	Box
150-060-204	LA1	Steel	Nickel	6 g	400 pcs
150-069-115	LA16	Steel	Nickel	9 g	400 pcs
150-069-023	LAUSUS	Stainless Steel (SUS304)	Satin	10 g	250 pcs
150-060-669	LA-3310	Steel	Nickel	11 g	100 pcs

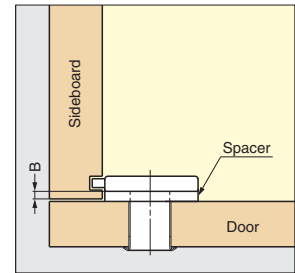
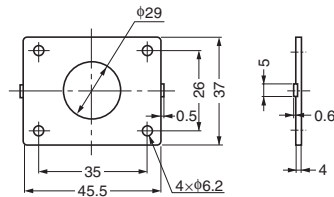
SPACER

TSSP



Features

Use when the additional distance on dimension B is required. (Multiple spacers can be used if needed)



Item Code	Item Name	Material	Colour	Thickness	Weight	Box	Carton
150-060-148	TSSP-W	ABS	White	4	14 g	150 pcs	1,500 pcs
150-060-149	TSSP-B	ABS	Black	4	14 g	150 pcs	1,500 pcs

PUSH LOCK



2150M, 2160M



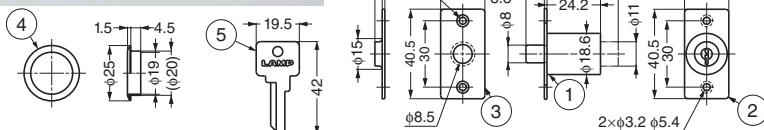
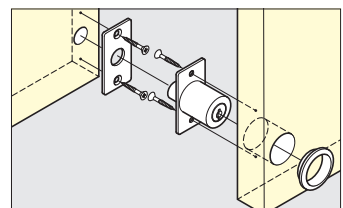
Features

- For sliding doors.
- 2150M - Lock to push the cylinder.
- 2160M - Lock to insert key and push the cylinder.
- 24 key changes available.
- For metal sheet: 2150B and 2160B (P.347).
- Keys can be shared with 2150M, 2160M, 2150B and 2160B Lock Series.

Parts Included

Countersunk head wood screw 2.7 × 16

Installation



Item Code	Old Item Code	Item Name	Key Type	How to Lock	Cylinder Diameter	Door Thickness	Weight	Box	Carton
150-060-067	—	2150M-B	Key Different	Without Key	φ18.6	24	50 g	24 pcs	240 pcs
150-001-383	150-060-068	2150M-D	Key Alike	Without Key	φ18.6	24	50 g	24 pcs	240 pcs
150-060-071	—	2160M-B	Key Different	With Key	φ18.6	24	50 g	24 pcs	240 pcs
150-001-385	150-060-072	2160M-D	Key Alike	With Key	φ18.6	24	50 g	24 pcs	240 pcs

No.	Part Name	Material	Finish
①	Body	Zinc Alloy (ZDC)	Nickel
②	Mounting Plate	Brass	Nickel
③	Strike	Brass	Nickel
④	Ring	Brass	Nickel
⑤	Key	Brass	Nickel