

CABINET LOCK



2550

LOCKS

CABINET LOCK



Features

- For drawers and cabinet door application.
- 300 key changes available. (Max. 80 key changes/Master Key)
- Keys can be shared with the previous 2520 model.
- Gold finish is available at surcharge.

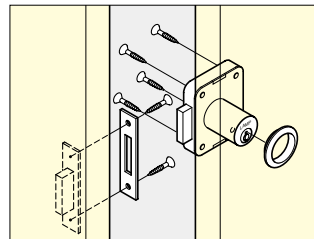
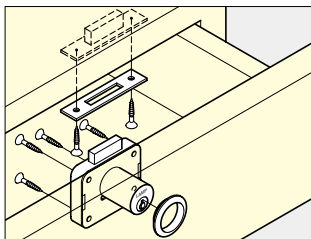
Parts Included

Countersunk head wood screw 3.1 × 20, 2.1 × 10

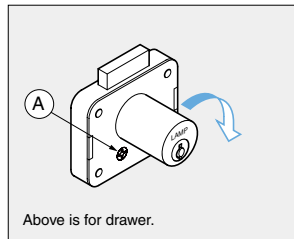
Optional Parts

- Master Key 2550MK
- Spacer 2550-SP (below)

Installation

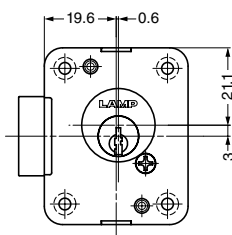
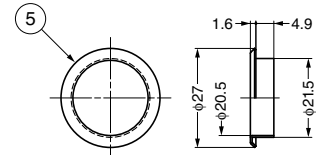
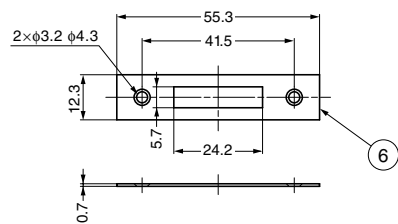


How to Switch: for Drawer/Right-handed Door Application

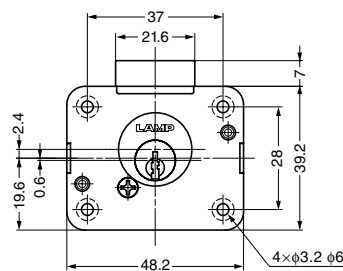


- ① Remove the screw (A).
- ② Turn the lock cylinder 90° (clockwise for door application).
- ③ Fix the screw in (B).
- ④ The logo "LAMP" is to be forwarded upside.

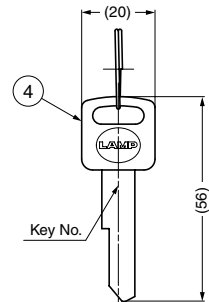
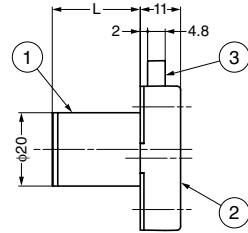
Above is for drawer.



Right-handed door



Drawer



Body

Item Code	Item Name	Key Type	Master Key System	Cylinder Diameter	Door Thickness	L	Weight	Box	Carton
150-001-216	2550-24-DN-MK-B	Key Different	With	φ20	24	24	140 g	12 pcs	120 pcs
150-022-051	2550-24-DN-B	Key Different	Without	φ20	24	24	140 g	12 pcs	120 pcs
150-001-214	2550-24-DN-D	Key Alike	Without	φ20	24	24	140 g	12 pcs	120 pcs
150-001-217	2550-36-DN-MK-B	Key Different	With	φ20	36	36	170 g	12 pcs	120 pcs
150-022-054	2550-36-DN-B	Key Different	Without	φ20	36	36	170 g	12 pcs	120 pcs
150-001-215	2550-36-DN-D	Key Alike	Without	φ20	36	36	170 g	12 pcs	120 pcs

Master Key (Sold Separately)

Item Code	Item Name
150-022-387	2550MK

Spacer (Sold Separately)

Item Code	Item Name	Material	Colour	Thickness
150-029-319	2550-SP	Polyamide (PA)	White	2

No.	Part Name	Material	Finish
①	Cylinder	Brass	Nickel
②	Body	Zinc Alloy (ZDC)	Nickel
③	Dead Bolt	Zinc Alloy (ZDC)	Nickel
④	Key	Brass/Resin	Nickel/Black
⑤	Ring	Brass	Nickel
⑥	Strike	Brass	Nickel