

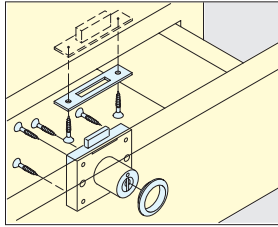
CABINET LOCK (W/INDICATOR)



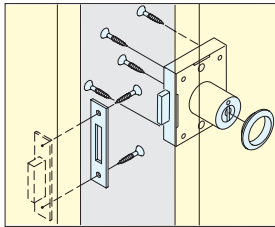
2200QL



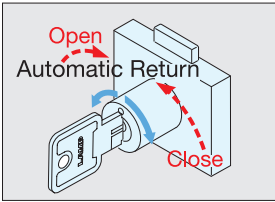
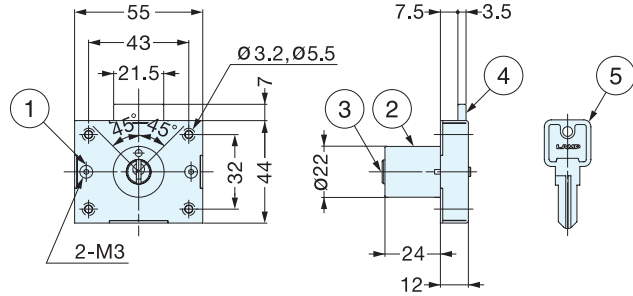
- Only 1/8 turn is needed to unlock/lock the door.
- Key automatically returns to original position, making it easy to remove the key.
- With indicator.
- 300 key changes available; Please specify keyed alike or differently when ordering.
- Master key type available at surcharge. (Maximum 170 key changes per master key)
- Keys can be shared with other 2200 series locks.



Installation for drawer



Installation for right-handed door
(This application is available with special ordered lock.)



Operation

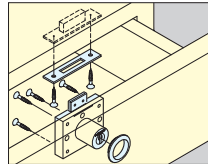
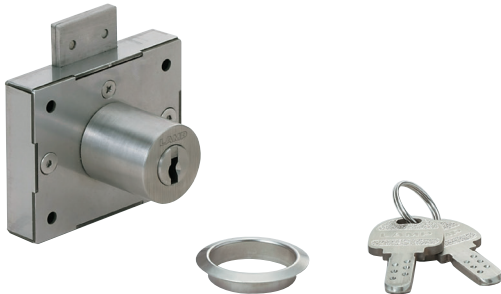
| Item No. | Door Thickness | Weight (g) | Box (pcs) | Carton (pcs) |
|-----------|----------------|------------|-----------|--------------|
| 2200QL-24 | 24 (15/16") | 200 | 12 | 60 |

| No. | Part Name | Material | Finish |
|-----|------------------|---------------------|--------------|
| ① | Body | 304 Stainless Steel | Plain |
| ② | Cylinder (Outer) | Brass | Satin Nickel |
| ③ | Cylinder (Inner) | Zinc Alloy | |
| ④ | Dead Bolt | | Nickel |
| ⑤ | Key | Brass | |

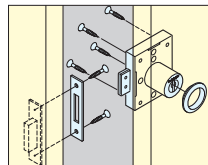
STAINLESS STEEL CABINET LOCK



3810S

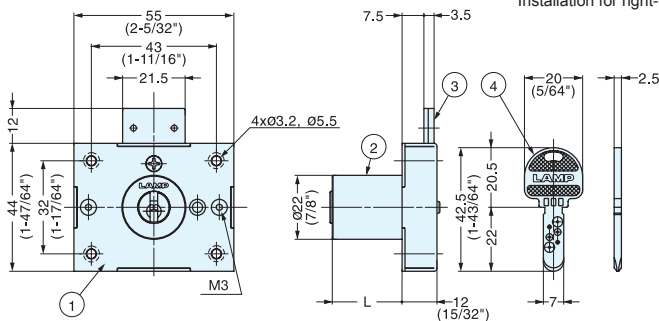


Installation for drawer

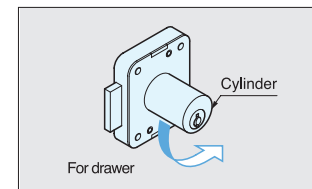


Installation for right-handed door

- Components made of 304 stainless steel for corrosion resistance.
- Durable key made of corrosion/abrasion resistant nickel. Key is reversible.
- Cylinder rotates for either drawer or cabinet door application.
- Up to 300 key changes available. Please specify keyed alike or differently when ordering.
- Master key option available as a special order at a surcharge.
- Can be used with spacer 6810-SP (P.623), sold separately.



6810-SP (Sold separately)



For drawer
To change lock for drawer application, turn cylinder 90° counterclockwise and install fixing screw.

| Item No. | L | Door Thickness (mm) | Weight (g) | Box (pcs) | Carton (pcs) |
|----------|--------------|---------------------|------------|-----------|--------------|
| 3810S-24 | 24 (15/16") | 24 (15/16") | 180 | 12 | 60 |
| 3810S-30 | 30 (1-3/16") | 30 (1-3/16") | 195 | | |

| No. | Part Name | Material | Finish |
|-----|------------------|---------------------|--------|
| ① | Body* | 304 Stainless Steel | Plain |
| ② | Cylinder Housing | | Satin |
| ③ | Dead Bolt | | Plain |
| ④ | Key | Nickel Silver | |

*Cylinder pins are made of brass.