

MINI GUIDE BLOCK & RAIL

MRS, MR

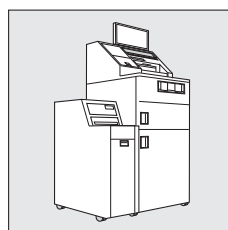
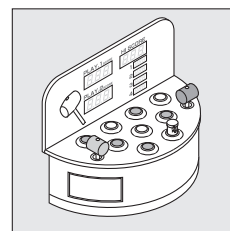
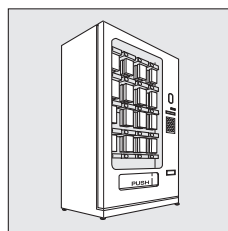
DRAWER SLIDES

MINI GUIDE BLOCK & RAIL



Features

- Ideal for small stroke application.
- No grease needed.



Load Rating Information

Reduction factor

*Certain reduction needs to be applied to the load rating depending on application or environment.

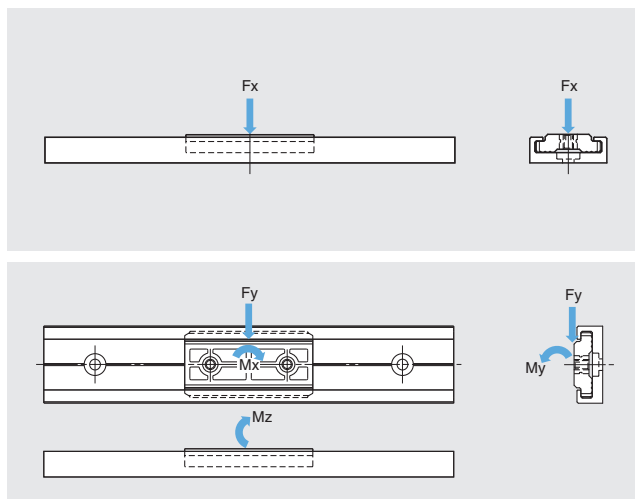
Conditions	Static Friction Coefficient	Dynamic Friction Coefficient
Low speed/low operation frequency	0.4 - 0.5	0.9 - 1.0
Moderate speed/high operation frequency	0.3 - 0.4	0.6 - 0.8
High operation frequency with vibration and shocks	0.2 - 0.3	0.3 - 0.5

Item Name	Horizontal Static Rated Load Fx		Vertical Static Rated Load Fy	
	N	kgf	N	kgf
MR-15CS	100	10.2	30	3.06
MR-20CS	300	30.6	175	17.8
MR-30CS	520	53.0	305	31.1
MR-40CS	700	71.4	490	50.0

Item Name	Vertical Static Rated Moment Mx		Horizontal Static Rated Moment My	
	N-m	kgf-cm	N-m	kgf-cm
MR-15CS	-	-	-	-
MR-20CS	3	30.6	1.5	15.3
MR-30CS	5	51.0	2.5	25.5
MR-40CS	7	71.4	3.5	35.7

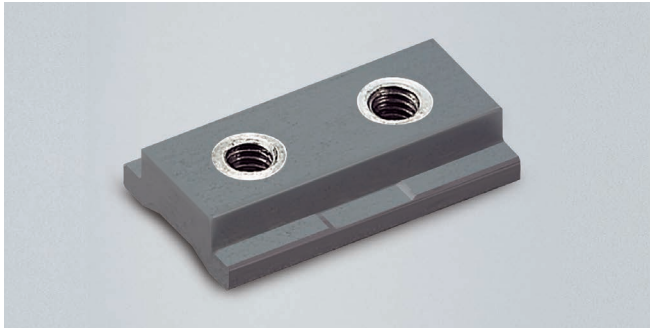
Item Name	Horizontal Static Rated Moment Mz	
	N-m	kgf-cm
MR-15CS	-	-
MR-20CS	1.5	15.3
MR-30CS	2.5	25.5
MR-40CS	3.5	35.7

* Item name has been revised.
(New:MR-30CS,Old:MR-50CN)



MINI GUIDE BLOCK

MR-15CS

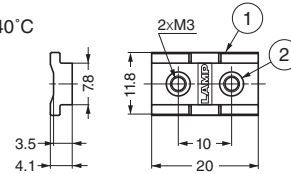


Features

- Does not need grease.
- Very compact.
- Easy to use solution for projects with lower precision requirements.
- MR is made from a special polyethylene resin with extremely smooth properties, eliminating need for grease or oil.
- Flame resistant (UL94HB rating).
- Use with MRS15 mini guide rail.
- See P.596 for load rating.

Specification

Temperature: 0°C-40°C

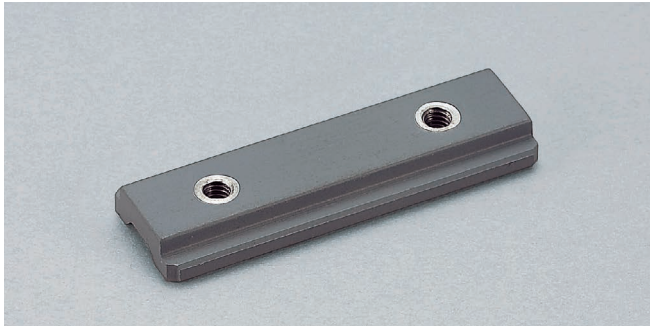


Item Code	Item Name	Guide Rail	Weight	Box
190-027-335	MR-15CS	MRS15	2 g	150 pcs

No.	Material	Finish/Colour
①	Polyethylene (UL94HB)	Grey
②	Stainless Steel (SUS304)	Plain

MINI GUIDE BLOCK

MR-20CS

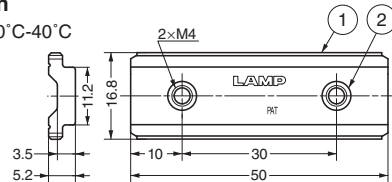


Features

- Does not need grease.
- Very compact.
- Easy to use solution for projects with lower precision requirements.
- MR is made from a special polyethylene resin with extremely smooth properties, eliminating need for grease or oil.
- Flame resistant (UL94HB rating).
- Use with MRS20 mini guide rail.
- See P.596 for load rating.

Specification

Temperature: 0°C-40°C

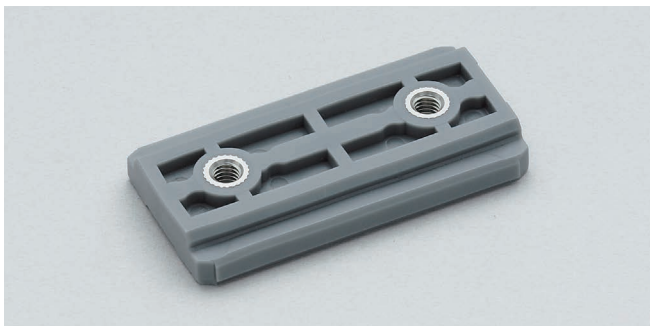


Item Code	Item Name	Guide Rail	Weight	Box
190-111-496	MR-20CS	MRS20	6 g	50 pcs

No.	Material	Finish/Colour
①	Polyethylene (UL94HB)	Grey
②	Stainless Steel (SUS304)	Plain

MINI GUIDE BLOCK

MR-30CS

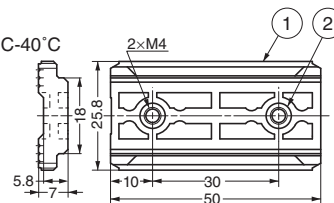


Features

- Does not need grease.
- Very compact.
- Easy to use solution for projects with lower precision requirements.
- MR is made from a special polyethylene resin with extremely smooth properties, eliminating need for grease or oil.
- Flame resistant (UL94HB rating).
- Use with MRS30 mini guide rail.
- See P.596 for load rating.

Specification

Temperature: 0°C-40°C



Item Code	Item Name	Guide Rail	Weight	Box
190-111-489	MR-30CS	MRS30	7 g	50 pcs

No.	Material	Finish/Colour
①	Polyethylene (UL94HB)	Grey
②	Stainless Steel (SUS304)	Plain

*Item name has been revised (Old item name : MR-50CN) .