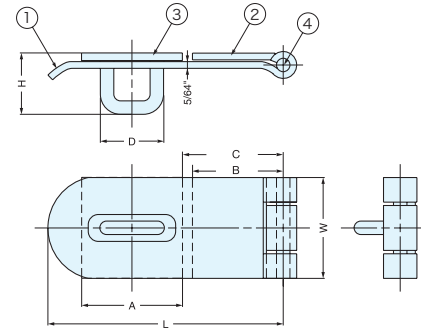


# WELD-ON STAINLESS STEEL HASP



# HP-635, 645, 660



(Dimensions shown in inches.)

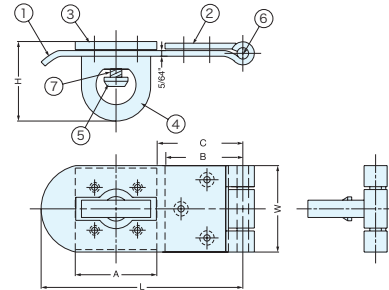
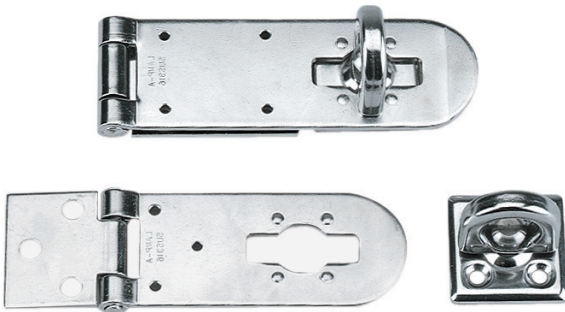
Item No.	L	W	A	B	C	D	H	Wt (g)	Box (pcs)	Carton (pcs)	No	Part Name	Material	Finish
HP-635	3-1/2"	1-1/2"	1-1/2"	1-5/16"	1-5/8"	15/16"	13/16"	110	20	200	1	Hinge Leaf Top	316 Stainless Steel	Electro Polished
HP-645	4-1/2"			2-1/4"	2-17/32"			173			2	Hinge Leaf Bottom		
HP-660	6"	2"	2-3/4"	3-61/64"	290	3	Base/Loop	4	Hinge Pin	304 Stainless Steel				

(Dimensions shown in inches.)

# STAINLESS STEEL HASP



# HP-635S, 645S, 660S



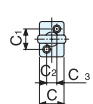
(Dimensions shown in inches.)

Item No.	L	W	A	B	C	H	Wt (g)	Box (pcs)	Carton (pcs)	No	Part Name	Material	Finish					
HP-635S	3-1/2"	1-1/2"	1-1/2"	1-5/16"	1-19/32"	1-3/8"	130	20	200	1	Hinge Leaf Top	316 Stainless Steel	Electro Polished					
HP-645S	4-1/2"			2-1/4"	2-7/16"		184			2	Hinge Leaf Bottom							
HP-660S	6"	2"	2-3/4"	3-7/8"	302	10	100	3	Base	4	Knobb			5	Rivet/Shaft	6	Hinge Pin	7

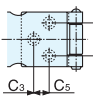
# STAINLESS STEEL HASP



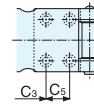
# HP



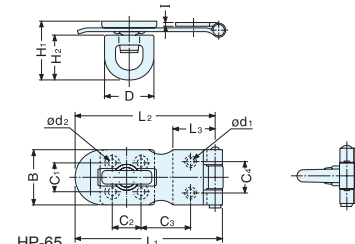
HP-40/50  
Rotating eye



HP-75/100  
Mounting Plate



HP-120  
Mounting Plate



Material	Finish
304 Stainless Steel	Polished

Item No.	L1	L2	L3	B	C1	C2	C3	C4	C5	H1	H2	C	D	I	d1	d2	Weight (g)	Box (pcs)	Carton (pcs)
HP-40	40 ( 1-37/64" )	37	13.0	22.0( 7/8" )	13	6.4	10.8	12	-	22.0 ( 55/64" )	17.9	15.3	17.7	1.2	3.0	3.0	21.5	30	300
HP-50	50 ( 1-31/32" )	47		22.3( 7/8" )		9.0	16.0		-	-	-	-	-	18.3	24.0	25	250		
HP-65	65 ( 2-9/16" )	62	19.0	24.0( 15/16" )	13.0	21.5	14	-	24.5 ( 31/32" )	20.4	24.5	22.5	23.2	1.5	3.2	3.2	41.5	20	200
HP-75	75 ( 2-61/64" )	72	24.8	27.0( 1-1/16" )	15	15.0	15.7	16	9.5	27.4 ( 1-5/64" )	22.0	27.8	23.2	3.8	3.8	51.5	15	150	
HP-100	100 ( 3-15/16" )	95	30.0	35.5( 1-25/64" )	19	19.0	29.0	21	10.0	32.2 ( 1-9/32" )	27.9	35.5	31.0	2.0	4.0	4.5	118.5	10	100
HP-120	120 ( 4-23/32" )	115	35.5	40.0 ( 1-37/64" )	21	22.0	38.0	26	15.0	34.8 ( 1-3/8" )	40.5	40.5	31.0	2.5	5.2	5.2	172.0	8	80