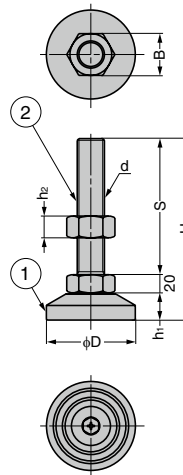


HEAVY DUTY LEVELLING GLIDE SDY-MS

LOAD CAPACITY 24500~29400 N **SUS**


- Levelling glide subject to galling preventive treatment.
- Different bolt lengths, bolt diameters (M16, M20 and M24) and steel models also available by made to order (minimum order 10 pcs).

[Sold Separately]

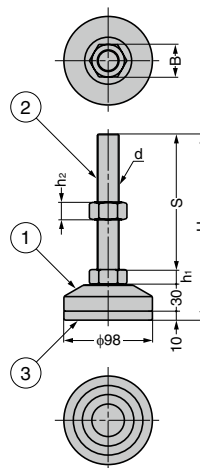
- Glide base SDY-L (for 1 M42 only)

No.	Part Name	Material	Finish
①	Body	Stainless Steel (SUS304)	Polished
②	Threaded Bolt		

RoHS	CAD	Item Code	Item Name	d	φD	H	h ₁	h ₂	S	B	Load Capacity N/pc	Load Capacity kgf/pc	Weight (kg)	Box (pcs)	Carton (pcs)
☑	SD	200-024-359	SDY-MS-30-150	M30	98	200	30	24	150	46	24500	2500	2.65	1	–
☑	SD	200-024-360	SDY-MS-30-200			250							200	–	
☑	SD	200-024-361	SDY-MS-42-150	M42	127	203	33	32	150	60	29400	3000	4.68	1	–
☑	SD	200-024-362	SDY-MS-42-200			253							200	–	
☑	SD	200-024-363	SDY-MS-42-250			303							250	–	
☑	SD	200-024-364	SDY-MS-42-300			353							300	–	

Refer to 1D : P.806

HEAVY DUTY LEVELLING GLIDE SDY-MSR

LOAD CAPACITY 19600~24500 N **SUS**


- Levelling glide subject to galling preventive treatment.
- Base made of nitrile rubber to prevent from skidding and scratching the floor.
- Different bolt lengths, bolt diameters (M16, M20) and steel models also available by made to order (minimum order 10 pcs). In addition, levelling glides with conductive rubber base also available (minimum order 200 pcs).

No.	Part Name	Material	Finish/Colour
①	Body	Stainless Steel (SUS304)	Polished
②	Threaded Bolt		
③	Base	Nitrile Rubber (NBR)	Black

RoHS	CAD	Item Code	Item Name	d	H	h ₁	h ₂	S	B	Load Capacity N/pc	Load Capacity kgf/pc	Weight (kg)	Box (pcs)	Carton (pcs)
☑	SD	200-024-365	SDY-MSR-24-150	M24	206	16	19	150	36	19600	2000	2.14	1	–
☑	SD	200-024-366	SDY-MSR-24-200		256							200	–	
☑	SD	200-024-367	SDY-MSR-30-150	M30	210	20	24	150	46	24500	2500	2.78	1	–
☑	SD	200-024-368	SDY-MSR-30-200		260							200	–	