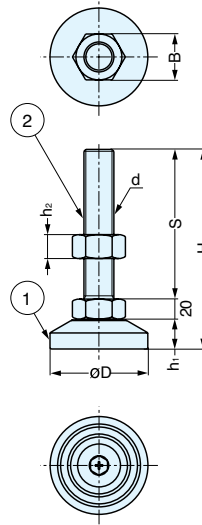


HEAVY DUTY STAINLESS STEEL LEVELING GLIDE



SDY-MS



- Heavy duty leveling glide (5,500 lbs – 6,600 lbs).
- Anti-seize coating.
- SDY-MS-42 can be used with SDY-L base (sold separately).

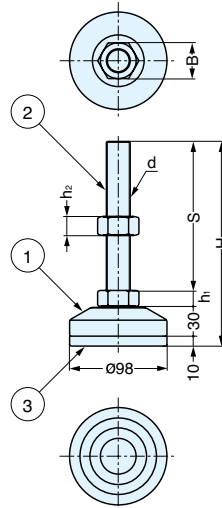
Part Name	Material	Finish
Base	304 Stainless Steel	Electropolished
Bolt		

Item No.	d	ØD	H	h ₁	h ₂	S	B	Weight (g)	Load Capacity (kg)
SDY-MS-30-150	M30	98	200 (7-7/8")	30	24	150 (5-29/32")	46	2650	2500 (5500 lbs)
SDY-MS-30-200		(3-55/64")	250 (9-27/32")	(1-3/16")	(15/16")	200 (7-7/8")	(1-13/16")	2950	
SDY-MS-42-150	M42	127 (5")	203 (7-63/64")	33 (1-19/64")	32 (1-17/64")	150 (5-29/32")	60 (2-23/64")	4680	3000 (6600 lbs)
SDY-MS-42-200			253 (9-61/64")			200 (7-7/8")		5170	
SDY-MS-42-250			303 (11-59/64")			250 (9-27/32")		5600	
SDY-MS-42-300			353 (13-57/64")			300 (11-13/16")		6060	

HEAVY DUTY STAINLESS STEEL LEVELING GLIDE



SDY-MSR



- Heavy duty leveling glide (4,400 lbs – 5,500 lbs).
- Anti-seize coating.
- Nitrile rubber base prevents scratching the floor.

Part Name	Material	Finish
Body	304 Stainless Steel	Electropolished
Bolt		
Base		Black Nitrile Ruber (NBR)

Item No.	d	H	h ₁	h ₂	S	B	Weight (g)	Load Capacity (kg)
SDY-MSR-24-150	M24	206 (8-7/64")	16	19	150 (5-29/32")	36	2140	2000 (4400 lbs)
SDY-MSR-24-200		256 (10-5/64")	(5/8")	(3/4")	200 (7-7/8")	(1-27/64")	2300	
SDY-MSR-30-150	M30	210 (8-17/64")	20	24	150 (5-29/32")	46	2780	2500 (5500 lbs)
SDY-MSR-30-200		260 (10-15/64")	(25/32")	(15/16")	200 (7-7/8")	(1-13/16")	3080	