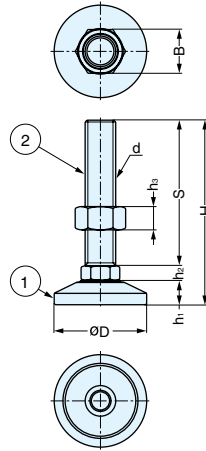


ULTRA HEAVY DUTY STAINLESS STEEL LEVELING GLIDE SDY-TRSB



- Ultra heavy duty leveling glide (14,300 lbs – 24,200 lbs).
- Anti-seize coating.
- Built-in bearing allows for easy leveling adjustment.
- 30 degrees trapezoidal thread screw.
- Glide base "SDY-L" required.

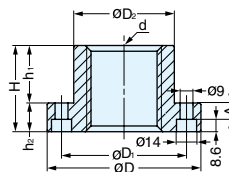
Part Name	Material	Finish
Base	304 Stainless Steel	Electropolished
Bolt		

Item No.	d	D	H	h ₁	h ₂	h ₃	S	B	Weight (g)	Load Capacity (kg)
SDY-TRSB-42-200	Tr42	127	253.5 (9-63/64")	33.5	20	32	200 (7-7/8")	60 (2-23/64")	4820	6500 (14300 lbs)
SDY-TRSB-42-300		(5")	353.5 (13-59/64")	(1-5/16")	(25/32")	(1-17/64")	300 (11-13/16")		5720	
SDY-TRSB-52-200	Tr52	137	260.5 (10-1/4")	38.5	22	42	200 (7-7/8")	80 (3-5/32")	7680	9000 (19800 lbs)
SDY-TRSB-52-300		(5-25/64")	360.5 (14-3/16")	(1-33/64")	(55/64")	(1-21/32")	300 (11-13/16")		9080	
SDY-TRSB-60-200	Tr60	147	266.5 (10-31/64")	42.5	24	48	200 (7-7/8")	90 (3-35/64")	10340	11000 (24200 lbs)
SDY-TRSB-60-300		(5-25/32")	366.5 (14-27/64")	(1-43/64")	(15/16")	(1-57/64")	300 (11-13/16")		12140	

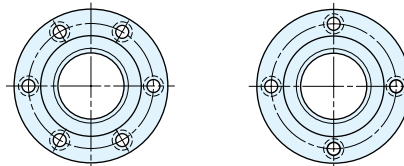
GLIDE BASE FOR "SDY" HEAVY DUTY LEVELING GLIDE



SDY-L



- Glide base for:
SDY-TRSB
SDY-TRAS
SDY-MS-42 Series



Material	Finish
Brass	Nickel

Item No.	d	D	D ₁	D ₂	H	h ₁	h ₂	A	Weight (g)
SDY-LMB-42	M42 (For Metric screw)	97 (3-13/16")	77 (3-1/32")	60 (2-23/64")	40 (1-37/64")	22 (55/64")	18 (0-45/64")	9.4 (0-3/8")	1200
SDY-LMB-42	M42 (For Metric screw)	107 (4-7/32")	87 (3-27/64")	70 (2-3/4")	50 (1-31/32")	30 (1-3/16")	20 (0-25/32")	11.4 (0-29/64")	1640
SDY-LMB-52	M52 (For Metric screw)	117 (4-39/64")	97 (3-13/16")	80 (3-5/32")	60 (2-23/64")	40 (1-37/64")	20 (0-25/32")	11.4 (0-29/64")	2150
SDY-LTB-42	Tr42 × 6 (For Trapezoid screw)	97 (3-13/16")	77 (3-1/32")	60 (2-23/64")	50 (1-31/32")	32 (1-17/64")	18 (0-45/64")	9.4 (0-3/8")	1330
SDY-LTB-52	Tr52 × 7 (For Trapezoid screw)	107 (4-7/32")	87 (3-27/64")	70 (2-3/4")	60 (2-23/64")	40 (1-37/64")	20 (0-25/32")	11.4 (0-29/64")	1800
SDY-LTB-60	Tr60 × 8 (For Trapezoid screw)	117 (4-39/64")	97 (3-13/16")	80 (3-5/32")	70 (2-3/4")	50 (1-31/32")	20 (0-25/32")	11.4 (0-29/64")	2360