

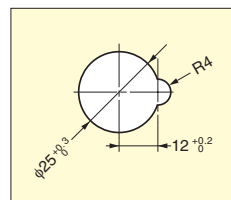
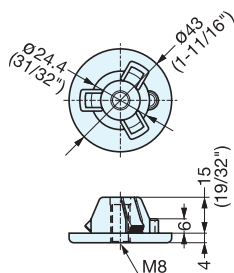
GLIDE BASE



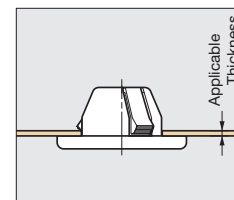
AD-438



• Snap-in glide base for sheet metal 1/32" to 1/16" (0.8-1.6 mm) thick.



Bore Dimension



Installation

Material	Finish
Polyacetal	Grey

Item No.	Applicable Sheet Metal Thickness (mm)	Load Capacity (kg)	Weight (g)	Box (pcs)	Carton (pcs)
AD-438	0.8~1.6 (1/32"-1/16")	50 (110lbs)	10	100	1000

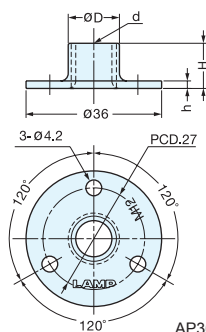
STAINLESS STEEL GLIDE BASE



AP-36



• 304 stainless steel for rust and corrosion resistance.



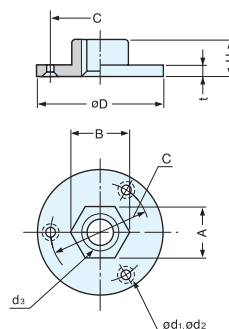
Material	Finish
304 Stainless Steel	Plain

Item No.	d	D	h	H	Weight (g)	Box (pcs)	Carton (pcs)
AP-36-M8	M8X1.25	(9.6)	1.5	12.0	16	100	1000
AP-36-M10	M10X1.5	(11.5)	1.5	12.0	16	100	1000
AP-36-N3	W3/8-16.0	(10.9)	1.5	12.0	16	100	1000
AP-36-M12	M12X1.75	(13.9)	2.0	11.5	20	80	800

GLIDE BASE



KD-555



Material	Finish
Zinc Alloy	Clear Zinc Chromate

Item No.	D	C	H	t	d ₁	d ₂	d ₃	A	B	Weight (g)	Box (pcs)	Carton (pcs)
KD-555-28-M10	28 (1-3/32")	20	9	2.7	3.2	6.4	M10x1.5	13.0	14.0	15	240	1440
KD-555-25	25 (1")	19	8	2.7	3.2	5.3	W5/16-18	11.2	12.5	10	320	1920
KD-555-28	28 (1-3/32")	20	9	2.7	3.2	6.4	W3/8-16	13.0	14.0	15	240	1440
KD-555-39	39 (1-17/32")	30	11	3.0	3.2	6.4	W1/2-12	15.8	16.8	30	100	600