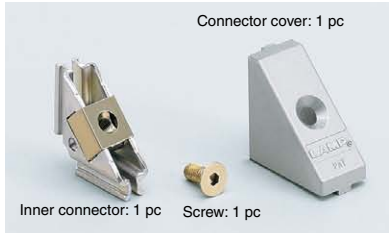


# CORNER CONNECTOR PJ One-touch Connector Post-installation Type



- Used for easily installing single-groove aluminium frames to each other.
- Conductive type and standard type are available.
- Can be directly installed to the desired position (see installation procedure below).
- Easy connection of aluminium frames with one screw.
- Unique installation system shortens working time.
- Widely applied to various aluminium frames.
- Only 3 parts.
- PJ-80HA and PJ-100HA can be used to install 5mm panel by changing the direction of connector cover (choose the type with screw hole).
- Clean appearance.

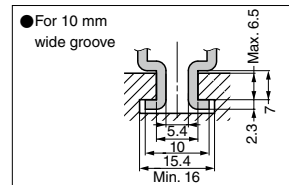
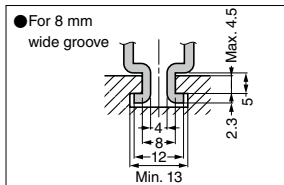
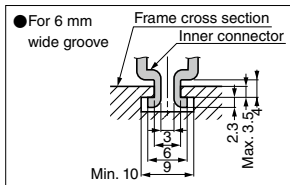
## [Parts]



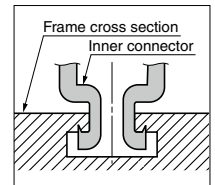
## [Remarks]

- Aluminium frames to be connected should be of the same size and shape.
- Applicable frame size is for reference. Please check with actual item.
- Recommended tightening torque varies depending on installation conditions. Determine torque value by test before use.
- Conductive type cannot guarantee perfect conduction. In addition, reusing corner connector may cause poor conductivity. Please make conductivity check after assembly.
- The failure load in the table below is the static load when the corner connector is damaged and the aluminium frames dropped out by the "Failure load test method". It does not guarantee the strength.

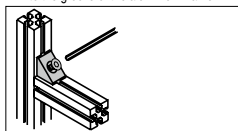
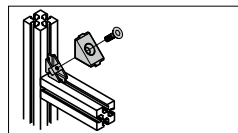
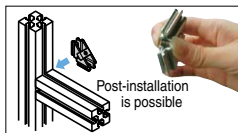
## [Applicable Frame Reference Dimensions]



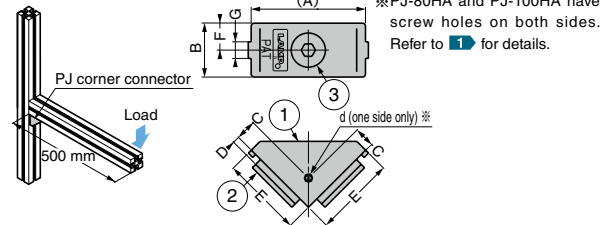
## [Conductive Type Cutaway View]



## [Installation]



## [Failure load Test Method]



No.	Part Name	Material	Finish
①	Connector cover	Aluminium Alloy (ADC)	Silver Enamel Finish
②	Inner connector	Steel	Coloured Zinc Chromate (Trivalent)
③	Hexagon Socket Countersunk Head Screw		Nickel

## [Conductive Type]

RoHS	CAD	Item Code	Item Name	d	Groove Width	A	B	C	D	E	F	G	③ Size	Recommended Tightening Torque N·m	Recommended Tightening Torque kgf·cm	Failure Load N	Failure Load kgf	Weight (g)	Box (pcs)	Carton (pcs)
☑	☑	120-012-423	PJ-60AE	w/o	For 6 mm	22	10	39	1-3	11	6	M6 × 16	6	61.2	284	29	69	40	240	
☑	☑	120-012-424	PJ-60ATE	M4	55															67
☑	☑	120-012-425	PJ-80AE	w/o	For 8 mm	26	13	8	1.5-4.5	13	8	M8 × 16	13	133	392	40	82	35	210	
☑	☑	120-012-426	PJ-80ATE	M4	57															83

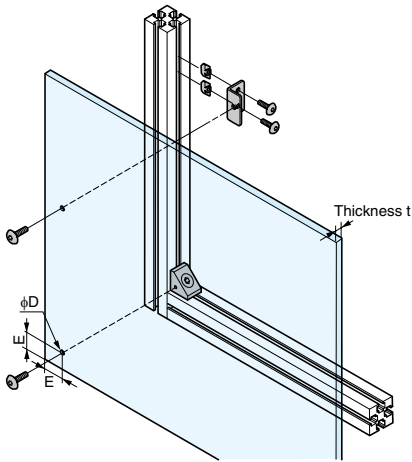
## [Standard Type]

RoHS	CAD	Item Code	Item Name	d	Groove Width	A	B	C	D	E	F	G	③ Size	Recommended Tightening Torque N·m	Recommended Tightening Torque kgf·cm	Failure Load N	Failure Load kgf	Weight (g)	Box (pcs)	Carton (pcs)
☑	☑	120-041-251	PJ-60A	w/o	For 6 mm	22	10	39	1-3	11	6	M6 × 16	6	61.2	284	29	67	40	240	
☑	☑	120-041-250	PJ-60AT	M4																55
☑	☑	120-041-253	PJ-80A	w/o	For 8 mm	26	13	8	1.5-4.5	13	8	M8 × 16	13	133	392	40	82	35	210	
☑	☑	120-041-252	PJ-80AT	M4																57
☑	☑	120-040-557	PJ-80HA	M5	For 10 mm	57	25	12	1.5-4.7	40	15	10	M8 × 25	6	61.2	833	85	165	15	90
☑	☑	120-040-558	PJ-100HA			71	32.5	12	4.5-7	50										

Refer to 1 : P.704

[Panel Installation Dimensions]

Processing dimensions when installing the panel inside the aluminium frame.



	Frame Size 30 × 30 mm	Frame Size 40 × 40 mm	Frame Size 45 × 45 mm	Frame Size 30 × 60 mm	D	E
	Thickness t	Thickness t	Thickness t	Thickness t		
PJ-60T	5	-	-	-	6	9
PJ-80T	2.5	7.5	-	-		
PJ-100T	-	5	-	-		
PJ-60AT	4	-	-	-		
PJ-80AT	2	7	-	-	8.5	11
PJ-80ATE	5	5	-	-		
PJ-100HA	-	-	5	5	6	9
PJ-60W30T	-	-	-	2.5		
PJ-80W30T	-	-	-	-		

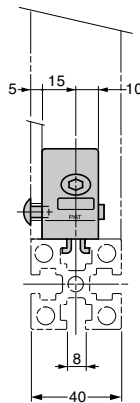
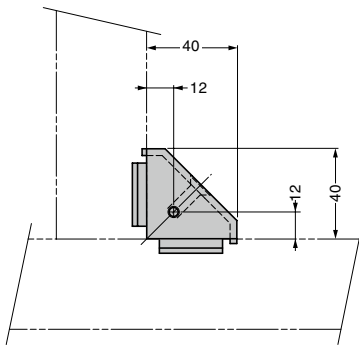
※Installation example with 1 mm gap provided between panel and frame.

**CORNER CONNECTOR PJ One-touch Connector Post-installation Type Installation Example**

PJ-80HA 1

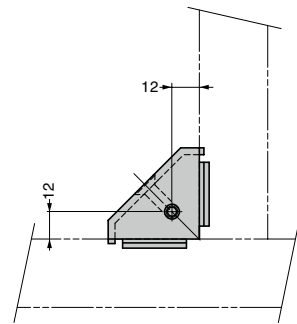
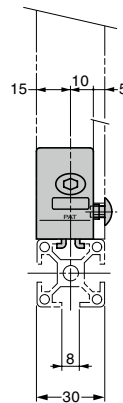
● Frame size 40 × 40

Groove width 8mm type



● Frame size 30 × 30

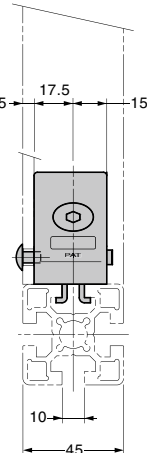
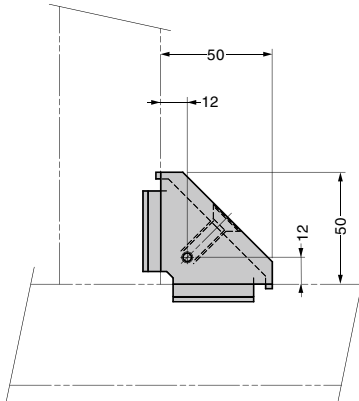
Groove width 8mm type



PJ-100HA 1

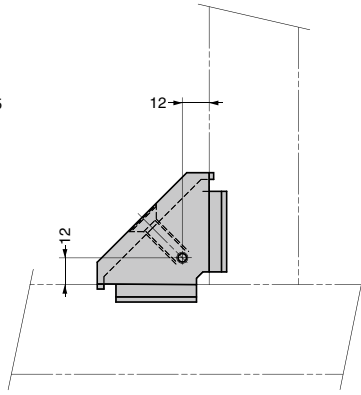
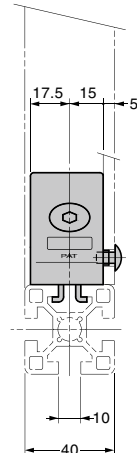
● Frame size 45 × 45

Groove width 10 mm type



● Frame size 40 × 40

Groove width 10 mm type



Refer to 1 : P.701