

Scharniere Hinges

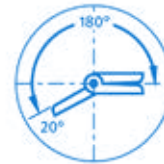
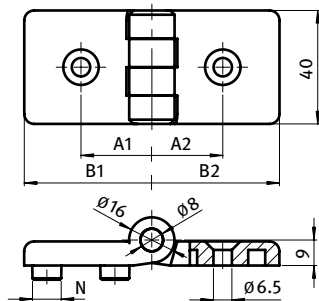
Kunststoffscharniere Plastic Hinges



KUNSTSTOFFSCHARNIER SCHWER 30

HEAVY-DUTY PLASTIC HINGE 30

Ausführung	nicht aushängbar	Model	Non-detachable
Beschreibung	für Flächenelemente und Aluminiumprofile, mit je zwei Steckplätzen für Zentrierbolzen	Description	To hinge panels or aluminum profiles; each side has two holes for centering bolts
Material	Flügel: Kunststoff PA, glasfaserverstärkt Achse: Edelstahl Montageset: Stahl	Material	Wings: Plastic PA, glass fiber reinforced Axle: Stainless steel Assembly set: Steel
Farbe	Flügel: schwarz	Color	Wings: Black
Befestigung	vorderseitig mit Senkschraube M6	Fastening	From the front, using M6 countersunk screws
Montageset 2	1 Schraube DIN 7991 - M6 × 16, 1 Hammermutter Nut 8 - M6, 1 Schraube DIN 7991 - M6 × 18, 1 Hammermutter Nut 10 - M6	Assembly Set 2	1 screw DIN 7991 - M6 × 16, 1 hammer nut slot 8 - M6, 1 screw DIN 7991 - M6 × 18, 1 hammer nut slot 10 - M6
Liefereinheit	10 Stück	Pack Quantity	10 pieces
Extras	☁ elektrostatisch entladend, weitere Größen, weitere Farben auf Anfrage	Specials	☁ electrostatically discharging, other sizes, other colors on request



Kunststoffscharnier schwer 30 Heavy-duty Plastic Hinge 30	A1 [mm]	A2 [mm]	B1 [mm]	B2 [mm]	F _{max} [N]	F _{Rmax} [N]	N	Gewicht [g] Weight [g]	Teil-Nr. Part #
30 / 30	17.5	17.5	30.0	30.0	150.0	280.0		36.0	095KS3030F00
	17.5	17.5	30.0	30.0	150.0	280.0	8	37.0	095KS3030F08
30 / 40	17.5	22.5	30.0	39.0	150.0	280.0		38.0	095KS3040F00
	17.5	22.5	30.0	39.0	150.0	280.0	8	39.0	095KS3040F08
	17.5	22.5	30.0	39.0	150.0	280.0	8 / 10	39.0	095KS3040F0810
30 / 45	17.5	25.0	30.0	45.0	150.0	280.0		39.0	095KS3045F00
	17.5	25.0	30.0	45.0	150.0	280.0	8 / 10	40.0	095KS3045F0810
30 / 60	17.5	32.5	30.0	60.0	130.0	280.0		43.0	095KS3060F00
	17.5	32.5	30.0	60.0	130.0	280.0	8 / 10	44.0	095KS3060F0810
30 / 40 inkl. Montageset 2 30 / 40 With assembly set 2	17.5	22.5	30.0	39.0	150.0	280.0	8 / 10	44.0	095KS3040F0810S01
30 / 45 inkl. Montageset 2 30 / 45 With assembly set 2	17.5	25.0	30.0	45.0	150.0	280.0	8 / 10	45.0	095KS3045F0810S02
30 / 60 inkl. Montageset 2 30 / 60 With assembly set 2	17.5	32.5	30.0	60.0	130.0	280.0	8 / 10	49.0	095KS3060F0810S01

