



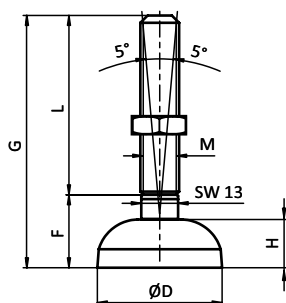
**FESTER STELLFUß – GLOCKE****PIVOT FOOT – BELL****Ausführung** Stahl, verzinkt**Model** Steel, zinc plated

**Beschreibung** fester, nivellierbarer Stellfuß zum Ausgleich von Bodenunebenheiten,  elektrostatisch entladend, mit Mutter DIN 439 (ISO 4035) Form B; Lieferung montiert

**Description** A leveling foot for slightly uneven floors,  electrostatically discharging, with nut DIN 439 (ISO 4035) form B; factory assembled

**Material** Teller: Stahl, verzinkt  
Gewindestange: Stahl, verzinkt  
Mutter: Stahl, verzinkt

**Material** Base: Steel, zinc plated  
Threaded rod: Steel, zinc plated  
Nut: Steel, zinc plated

**Liefereinheit** 10 Stück**Pack Quantity** 10 pieces**Hinweis** passende Anti-Slip Platte siehe Seite 64**Tip** Compatible anti-slip plate see page 64

Teller Base	D [mm]	F [mm]	H [mm]	L [mm]	M × G [mm]	Tragkraft [kg] Max. Load [kg]	Gewicht [g] Weight [g]	Profil Profile	Teil-Nr. Part #
45	44	25.7	17.0	59.3	M12 × 85	1000	151.0	B	<a href="#">9AB045M12085MN</a>
45	44	25.7	17.0	134.3	M12 × 160	1000	190.0	B	<a href="#">9AB045M12160MN</a>
45	44	27.0	17.0	118.0	M16 × 145	1000	273.0	B	<a href="#">9AB045M16145MN</a>
60	58	28.5	20.0	59.5	M12 × 88	1000	186.0	B	<a href="#">9AB060M12085MN</a>
90	90	29.5	20.0	55.5	M16 × 85	2000	423.0	B	<a href="#">9AB090M16085MN</a>
90	90	29.5	20.0	115.5	M16 × 145	2000	494.0	B	<a href="#">9AB090M16145MN</a>
90	90	29.5	20.0	170.5	M16 × 200	2000	567.0	B	<a href="#">9AB090M16200MN</a>