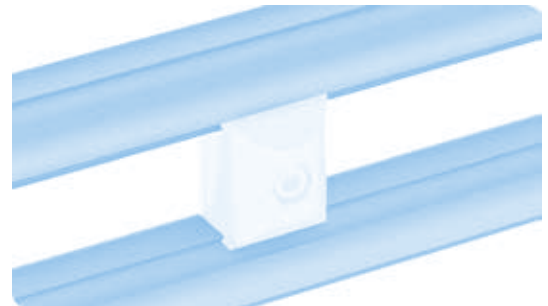
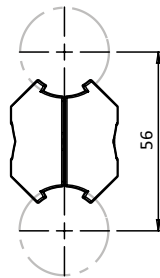
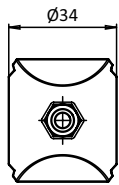


**SET PARALLELVORBINDER D28**

<b>Ausführung</b>	für Rundrohrprofil
<b>Beschreibung</b>	zur parallelen Verbindung von zwei Rundrohrprofilen mit Außendurchmesser $\varnothing$ 28 mm; mit Verdrehsicherung; komplett vormontiertes Set
<b>Material</b>	Verbinder: Aluminiumdruckguss Montageset: Stahl
<b>Set</b>	2 Elemente für Parallelverbinder D28, 1 Schraube DIN 912 - M6 $\times$ 25, 1 selbstsichernde Mutter ISO 10511 - M6
<b>Liefereinheit</b>	10 Stück

**SET PARALLEL CONNECTOR D28**

<b>Model</b>	For tubular frame profiles
<b>Description</b>	To parallelly connect two tubular frame profiles with $\varnothing$ 28 mm outer diameter; with pre-centering; completely pre-assembled set
<b>Material</b>	Connector: Aluminum die-cast Assembly set: Steel
<b>Set</b>	2 components for parallel connector D28, 1 screw DIN 912 - M6 $\times$ 25, 1 self-locking nut ISO 10511 - M6
<b>Pack Quantity</b>	10 pieces



Set Parallelverbinder D28  
Set Parallel Connector D28

Gewicht [g]  
Weight [g]

Teil-Nr.  
Part #

elektrostatisch entladend  electrostatically discharging

62.0

099RV28PS01