

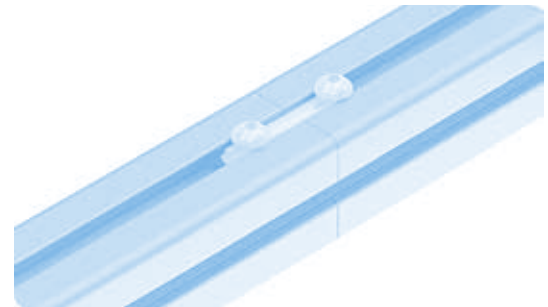
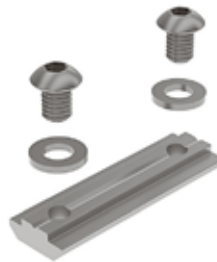
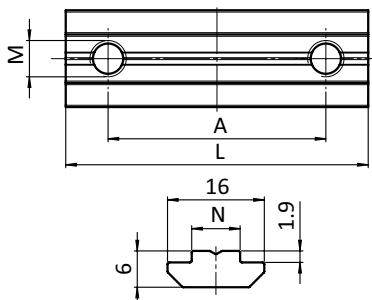
**STRECKENVERBINDER 50, NUT 8****CONNECTING STRIP 50, SLOT 8****Ausführung** Stahl**Model** Steel**Beschreibung** zur stirnseitigen Verbindung von zwei Aluminiumprofilen ohne Profilbearbeitung**Description** End-to-end connection of two aluminum profiles without machining**Material** Stahl, verzinkt**Material** Zinc plated steel

**Set 1** 1 Streckenverbinder 50, Nut 8,  
2 Schrauben ISO 7380 Form B - M6 × 8,  
2 Scheiben DIN 125

**Set 1** 1 connecting strip 50, slot 8,  
2 screws ISO 7380 Form B - M6 × 8,  
2 washers DIN 125

**Set 2** 2 Streckenverbinder 50, Nut 8,  
2 Schrauben DIN 913 - M6 × 10

**Set 2** 2 connecting strip 50, slot 8,  
2 screws DIN 913 - M6 × 10

**Liefereinheit** 10 Stück**Pack Quantity** 10 pieces

| Streckenverbinder 50, Nut 8<br>Connecting Strip 50, slot 8 | A<br>[mm] | L<br>[mm] | N | Größe<br>Size | Gewicht [g]<br>Weight [g] | Profil<br>Profile | Teil-Nr.<br>Part #        |
|--|-----------|-----------|---|---------------|---------------------------|-------------------|---------------------------|
| Set 1  | 36.0      | 50.0      | 8 | M6            | 35.0                      | B                 | <a href="#">096010S46</a> |
| Set 2  | 36.0      | 50.0      | 8 | M6            | 29.0                      | B                 | <a href="#">096010S05</a> |