



PLATE BUTT CONNECTOR (SET)

PLATTEN-STOSSVERBINDER (SET)

Model	Die-cast Aluminum	Ausführung	Aluminiumdruckguss
Description	End-to-end connection of two aluminum profiles of the same type	Beschreibung	zur stirnseitigen Verbindung von zwei Aluminiumprofilen der gleichen Baureihe
Material	Plate connector: Die-cast aluminum Screws / hammer nuts: Steel	Material	Plattenverbinder: Aluminiumdruckguss Schrauben / Hammermuttern: Stahl
Surface	Plate connector: Plain / alu color Screws / hammer nuts: Zinc plated	Oberfläche	Plattenverbinder: blank / alufarbig lackiert Schrauben / Hammermuttern: verzinkt
Set 1	2 plate connectors, 2 screws DIN 7984 - M8 x30, 4 screws DIN 7984 - M5 x 20, 4 hexagon nuts DIN 934 - M5	Set 1	2 Plattenverbinder, 2 Schrauben DIN 7984 - M8 x30, 4 Schrauben DIN 7984 - M5 x 20, 4 Sechskantmuttern DIN 934 - M5
Set 2	2 plate connectors, 2 self forming screws S12 x 30 - Torx T50, 4 screws DIN 7984 - M6 x 20, 4 hexagon nuts DIN 439 B - M6	Set 2	2 Plattenverbinder, 2 selbstformende Schrauben S12 x 30 - Torx T50, 4 Schrauben DIN 7984 - M6 x 20, 4 Sechskantmuttern DIN 439 B - M6
Set 3	2 plate connectors, 2 self forming screws S12 x 30 - Torx T50, 4 screws DIN 7984 - M6 x 20, 4 hexagon nuts DIN 934 - M6	Set 3	2 Plattenverbinder, 2 selbstformende Schrauben S12 x 30 - Torx T50, 4 Schrauben DIN 7984 - M6 x 20, 4 Sechskantmuttern DIN 934 - M6
Pack Quantity	10 pieces	Liefereinheit	10 Stück
Tip	Individual Plate Connector, not as part of a set, see page 47	Hinweis	Einzelne Plattenverbinder – nicht im Set – siehe Seite 47

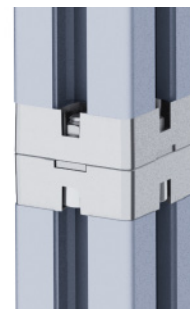
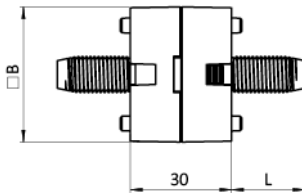


Plate Butt Connector (Set) Platten-Stoßverbinder (Set)		N	B [mm]	L [mm]	Weight [g] Gewicht [g]	Profile Profil	Part # Teil-Nr.
Plain <i>blank</i>	set 1 <i>Set 1</i>	8	30	19.0	92.0	B	099EA30300808RS02
	set 2 <i>Set 2</i>	10	40	22.0	184.0	B	099EA40401012RS02
	set 3 <i>Set 3</i>	10	45	22.0	206.0	B	099EA45451012RS02
Alu color <i>alufarbig</i>	set 1 <i>Set 1</i>	8	30	19.0	92.0	B	099EA30300808AS02
	set 2 <i>Set 2</i>	10	40	22.0	184.0	B	099EA40401012AS02
	set 3 <i>Set 3</i>	10	45	22.0	206.0	B	099EA45451012AS02