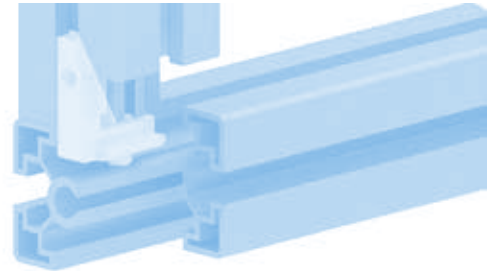
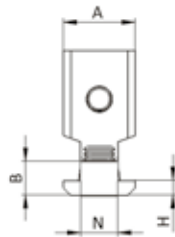


**INNENVERBINDER****INNER CONNECTOR****Ausführung** Stahlguss / Zinkdruckguss**Model** Steel cast / zinc die-cast**Beschreibung** zur Verbindung von zwei Aluminiumprofilen, Montage ohne Profilbearbeitung**Description** To connect two aluminum profiles, assembly without machining**Material** Innenverbinder Ausführung ST: Stahlguss, verzinkt  
Innenverbinder Ausführung ZN: Zinkdruckguss, verzinkt  
Gewindestifte: Stahl, verzinkt**Material** Inner Connector ST version: Zinc-plated cast steel  
Inner Connector ZN version: Zinc-plated zinc die-cast  
Hexagon socket set screws: Zinc-plated steel**Liefereinheit** 10 Stück**Pack Quantity** 10 pieces

Innenverbinder Inner Connector	Gewindestifte Hexagon socket set screws	A [mm]	B [mm]	H [mm]	L1 [mm]	L2 [mm]	N [mm]	Gewicht [g] Weight [g]	Profil Profile	Teil-Nr. Part #
ST Stahlguss <i>ST cast steel</i>	M6	15.8	7.8	6.0	21.0	30.0	8	27.0	B	<b>099I9008M</b>
ST Stahlguss <i>ST cast steel</i>	M8	19.0	8.8	3.8	32.0	38.0	10	51.0	B	<b>099I9010M</b>
ZN Zinkdruckguss <i>ZN zinc die-cast</i>	M6	15.8	7.8	6.0	21.0	30.0	8	24.0	B	<b>099I9008</b>
ZN Zinkdruckguss <i>ZN zinc die-cast</i>	M8	19.0	8.8	3.8	32.0	38.0	10	44.0	B	<b>099I9010</b>