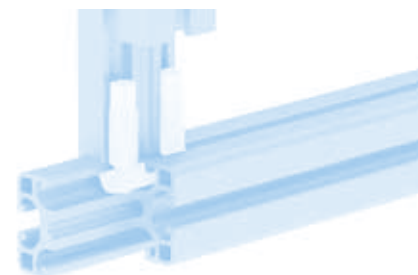
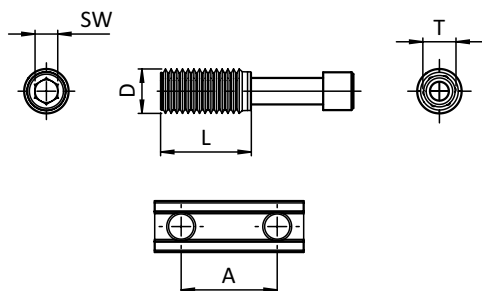


**T-MATIC DOPPELVERBINDER****T-MATIC DOUBLE CONNECTOR****Ausführung** Stahl**Model** Steel**Beschreibung** zur schnellen und stabilen Verbindung von zwei Aluminiumprofilen ohne Profilbearbeitung; selbstformendes Gewinde ohne Spanbildung**Description** To connect two aluminum profiles fast and solid, assembly without machining; self-forming thread, without chipping**Material** Stahl, verzinkt**Material** Zinc plated steel**Liefereinheit** 100 Stück**Pack Quantity** 100 pieces**Hinweis** \* passendes Abdeckblech siehe Seite 442**Tip** \* Compatible cover plate see page 442

T-Matic Doppelverbinder T-Matic Double Connector	A [mm]	D [mm]	L [mm]	SW	T	Nut Slot	Profilbreite Profile Width	Schraube Screw	Gewicht [g] Weight [g]	Profil Profile	Teil-Nr. Part #
	13.5	7.0	14.0	3	T25	5	20	M4 × 20	11.0	I	099H052D20
	13.5	7.0	24.0	3	T25	5	20	M4 × 30	16.0	I	099H054D20
	33.5	7.0	24.0	3	T25	5	40	M4 × 30	21.5	I	099H054D40
	20.0	11.5	24.0	5	T45	8	30	M6 × 34	44.0	B	099H087D30
	50.0	11.5	24.0	5	T45	8	60	M6 × 34	60.4	B	099H087D60
	25.4	12.0	24.0	6	T50	8	40	M8 × 35	58.0	I	*099H085D40
	65.4	12.0	24.0	6	T50	8	80	M8 × 35	80.5	I	*099H085D80
	25.4	12.0	32.0	6	T50	8	40	M8 × 43	69.0	I	099H086D40
	65.4	12.0	32.0	6	T50	8	80	M8 × 43	92.0	I	099H086D80
⚡ elektrostatisch entladend electrostatically discharging	13.5	7.0	14.0	3	T25	5	20	M4 × 20	11.0	I	099H052D20ESD
	13.5	7.0	24.0	3	T25	5	20	M4 × 30	16.0	I	099H054D20ESD
	20.0	11.5	24.0	5	T45	8	30	M6 × 34	44.0	B	099H087D30ESD
	50.0	11.5	24.0	5	T45	8	60	M6 × 34	60.4	B	099H087D60ESD
	25.4	12.0	24.0	6	T50	8	40	M8 × 35	58.0	I	*099H085D40ESD
	65.4	12.0	24.0	6	T50	8	80	M8 × 35	80.5	I	*099H085D80ESD
	25.4	12.0	32.0	6	T50	8	40	M8 × 43	69.0	I	099H086D40ESD
	65.4	12.0	32.0	6	T50	8	80	M8 × 43	92.0	I	099H086D80ESD