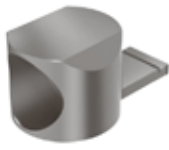
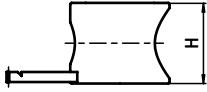
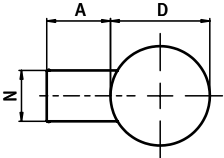


UNIVERBINDER

UNIVERSAL CONNECTOR

<p>Ausführung Zinkdruckguss</p> <p>Beschreibung zur Verbindung von zwei Aluminiumprofilen</p> <p>Material Univerbinder: Zinkdruckguss Montageset: Stahl</p> <p>Liefereinheit 100 Stück</p> <p>Montageset 1 Schraube DIN 912 - M8 x 30, 1 Nutenstein M8, Nut 10, mit Federblech</p> <p>Liefereinheit Set 10 Stück</p>	<p>Model Zinc die-cast</p> <p>Description To connect two aluminum profiles</p> <p>Material Universal connector: Zinc die-cast Assembly set: Steel</p> <p>Pack Quantity 100 pieces</p> <p>Assembly Set 1 screw DIN 912 -M8 x 30, 1 T-slot nut, slot 10, with spring leaf</p> <p>Pack Quantity Set 10 pieces</p>
--	--



4

Verbinder Connector	A [mm]	D [mm]	H [mm]	N	für Schraube for Screw	Gewicht [g] Weight [g]	Profil Profile	Teil-Nr. Part #
	12.7	19.7	16.0	10	M8	14.0		099A1045
inkl. Montageset <i>With assembly set</i>	12.7	19.7	16.0	10	M8	14.0	B	099A1045S03

