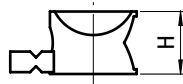
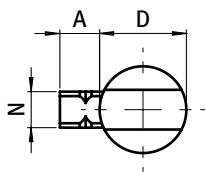




UNIVERBINDER

UNIVERSAL CONNECTOR

Ausführung	Zinkdruckguss	Model	Zinc die-cast
Beschreibung	zur Verbindung von zwei Aluminiumprofilen	Description	To connect two aluminum profiles
Material	Zinkdruckguss	Material	Zinc die-cast
Montageset 1	1 Nutenstein - Nut 5 - M4, 1 Schraube DIN 912 - M4 × 14	Assembly Set 1	1 T-slot nut - slot 5 - M4, 1 screw DIN 912 - M4 × 14
Montageset 2	1 Nutenstein - Nut 6 - M6, 1 Schraube ISO 7380 - M6 × 22	Assembly Set 2	1 T-slot nut - slot 6 - M6, 1 screw ISO 7380 - M6 × 22
Montageset 3	1 Nutenstein - Nut 8 - M8, 1 Schraube ISO 7380 - M8 × 30	Assembly Set 3	1 T-slot nut - slot 8 - M8, 1 screw ISO 7380 - M8 × 30
Liefereinheit	100 Stück	Pack Quantity	100 pieces
Liefereinheit Set	10 Stück	Pack Quantity Set	10 pieces



Univerbinder <i>Universal Connector</i>	A [mm]	D [mm]	H [mm]	N	für Schraube for Screw	Profilbreite Profile Width	Gewicht [g] Weight [g]	Profil Profile	Teil-Nr. Part #
	5.4	11.8	8.5	5	M4	20	3.4		099A0520
	9.3	15.7	12.5	6	M6	30	9.5		099A0630
	11.5	19.7	11.0	8	M6	30	13.0		099A0830
	13.7	19.7	16.0	8	M8	40	19.5		099A0840
inkl. Montageset 1 <i>With assembly set 1</i>	5.4	11.8	8.5	5	inkl. incl.	20	7.3	I	099A0520S01
inkl. Montageset 2 <i>With assembly set 2</i>	9.3	15.7	12.5	6	inkl. incl.	30	46.6	I	099A0630S01
	9.3	15.7	12.5	8	M6	30	9.0		099A0830S01
inkl. Montageset 3 <i>With assembly set 3</i>	13.7	19.7	16.0	8	inkl. incl.	40	18.6	I	099A0840S01

